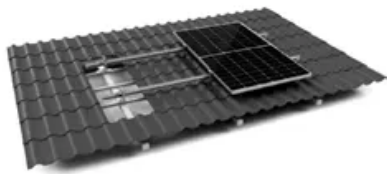


SolarTech Power Solutions

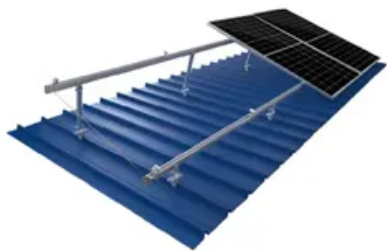
What size grid-connected box should I use for a 150kw inverter



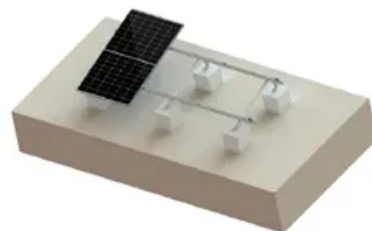
TILE ROOF SOLAR MOUNTING SYATEM



STANDING SEAM ROOF SYATEM



ADJUSTABLE TILT FLAT ROOF SYATEM



TRIANGLE FLAT ROOF SYATEM



Overview

What is a good inverter capacity for a grid-tied solar PV system?

A DC to AC ratio of 1.3 is preferred. System losses are estimated at 10%. With a DC to AC ratio of 1.3: In this example, an inverter rated at approximately 10.3 kW would be appropriate. Accurately calculating inverter capacity for a grid-tied solar PV system is essential for ensuring efficiency, reliability, and safety.

Do I need an inverter size chart?

The need for an inverter size chart first became apparent when researching our DIY solar generator build. Solar generators range in size from small generators for short camping trips to large off-grid power systems for a boat or house. Consequently, inverter sizes vary greatly.

How to choose the right inverter power?

Avoids Overloading: By selecting the right inverter power with a safety margin, you prevent overtaxing the system and potential breakdowns. To guarantee a reliable power supply, it is essential to align the continuous output of the inverter with or surpass the total wattage requirements of all connected devices.

What is a good ILR for a grid-tied inverter?

Typical values for grid-tied systems range from 1.1 to 1.4, meaning that the inverter capacity is often slightly smaller than the array's total DC output. An ILR greater than 1 ensures that the inverter operates closer to its maximum efficiency for most of the time.

Why should you choose a larger inverter?

By choosing a larger inverter size with a higher continuous rating, you can make certain that your system has the capacity to support future expansions without the need for frequent upgrades. This proactive approach also extends

to your battery bank capacity, aligning all components for peak performance.

How much power does an inverter need?

The continuous power requirement is actually 2250 but when sizing an inverter, you have to plan for the start up so the inverter can handle it. Third, you need to decide how long you want to run 2250 watts. Let's say you would like to power these items for an eight-hour period.

What size grid-connected box should I use for a 150kw inverter



How to Calculate Inverter Capacity for Grid-Tied ...

Nov 6, 2024 · Learn how to calculate and select the right inverter capacity for your grid-tied solar PV system. When designing a grid-tied solar PV system, ...

Grid-connected photovoltaic inverters: Grid codes, ...

Jan 1, 2024 · With the development of modern and innovative inverter topologies, efficiency, size, weight, and reliability have all increased dramatically. This paper provides a thorough ...



Choosing the Right Size Inverter for Your Solar Installation-----What ...

Need help deciding how much solar power you'll need to meet your energy needs? Use the Renogy solar calculator to determine your needs. Renogy has pure sine wave inverters ...



The Only Inverter Size Chart You'll Ever Need

Dec 4, 2024 · Please note the inverter connected with meter will be the Master Inverter and this Master inverter must be connected with battery. Insert one side of CAT5 cable into the first ...



Applications



Growcol: 150kW solar storage hybrid inverter

Description The GROWCOL:150KW Solar Storage Hybrid Inverter is a type of inverter designed to support large-scale solar energy systems. It is capable of managing and distributing power ...

How to Decide on the Right Inverter for Your ...

5 days ago · Choosing the right inverter for your grid-tied system requires careful consideration of various factors, including the size of your solar array, the level ...



PV Grid-connected Combiner Box

Mar 12, 2024 · PV Grid-connected



Combiner Box The photovoltaic grid-connected junction box combines the DC inputs of up to 24 photovoltaic cell components in series into one or multiple ...

GRID CONNECTED PV SYSTEMS WITH BATTERY ENERGY ...

May 22, 2023 · The term battery system replaces the term battery to allow for the fact that the battery system could include the energy storage plus other associated components. For ...



Microsoft Word

Dec 1, 2023 · 5. Typical power usage To determine the inverter size, it's useful to have an idea of how much power appliances draw: 6. What size inverter? When selecting the inverter size, ...

Huawei SUN2000-150kW MG0 Smart PV Controller Grid-Tied inverter

The HUAWEI SUN2000-150KTL-MG0 inverter is specifically designed to optimize energy efficiency and reliability in commercial and industrial solar installations, especially in ...



Contact Us

For catalog requests, pricing, or partnerships, please visit:
<https://www.posecard.eu>