

## SolarTech Power Solutions

# What should I do if the floor of the UPS battery cabinet bears the load



## Overview

---

Where do I install a line-up and match Battery Cabinet?

Line-up-and-match battery cabinets are installed adjacent to the UPS. The recommended installation location is on the right side of the UPS cabinet as viewed from the front of the cabinet. See Figure 3 for line-up-and-match configuration views. Figure 3. Eaton 93PM 100 kW UPS and Two 93PM Integrated Battery Cabinets.

Where is the UPS battery cabinet located?

The recommended location is to the right of the UPS cabinet. This procedure assumes the battery cabinet is located to the right of the UPS cabinet. 21. If line-up-and-match installation, remove the rectangular knockout on the bottom front side of the UPS and the IBC (see Figure 15).

Where is the battery cabinet located?

The battery cabinet may be located to either the right or left of the UPS cabinet. The recommended location is to the right of the UPS cabinet. This procedure assumes the battery cabinet is located to the right of the UPS cabinet. 21.

How many 93pm battery cabinets can a UPS system use?

The UPS system has been evaluated for use with a maximum of four 93PM Battery Cabinets. Use of any other configuration may result in fire, death, and voiding of the warranty. Disconnect the charging source prior to connecting or disconnecting battery terminals. Determine if the battery is inadvertently grounded.

Are lithium batteries better than lead-acid batteries for UPS?

Lithium batteries have significant benefits over lead-acid batteries for UPS, for example, small size, light weight, high cycle-count (charge-discharge cycles), faster recharge times, and built-in battery management (not just monitoring).

The technology is underactive development due to the demand from heavy-duty sectors like e-mobility.

Does ups need a floor?

UPS and batteries. Floor loading of UPS will vary based on the capacity and the type of the UPS. If there is a raised floor, the weight of the entire UPS system may require a concrete base to be installed upon. It is important that adequate floor space has to be provided for the UPS.

## What should I do if the floor of the UPS battery cabinet bears the lo

### MISSION CRITICAL FACILITIES DESIGN



Apr 30, 2015 · INTRODUCTION It can be very effectively argued that the heart of any UPS system supporting a mission critical facility is the battery plant. Examples of mission critical ...

### General requirements for the installation of UPS systems

Oct 21, 2023 · Ensure there is enough floor space for the UPS system, as specified in the manufacturer's data sheets. If rear access is not needed, the UPS can be installed against a ...

50KW modular power converter



### What is the ideal location for installing a UPS unit?

Mar 14, 2017 · Hello all, Just wondering where do you guys install your UPS units for power backups? Inside your main server room or in a separate power room? Ours are installed in the ...

## UPS/DC Battery Room, Equipment Installation Requirements ...

QC Before Installation - Battery room  
Equipment shall conform to all  
applicable requirements, standards, and  
specifications prior to release to be used  
as part of work. Incoming Battery ...



## Eaton three-phase UPS battery handbook

Apr 3, 2025 · Full-float operation -  
Operation of a DC system with the  
battery, battery charger and load  
connected in parallel, with the battery  
charger supplying the normal DC load  
plus any self ...

## Lithium batteries for UPS applications

Feb 25, 2025 · Traditional UPS  
applications are characterized by  
infrequent transfers to battery and  
relatively short discharge times when  
they do occur. This is typically referred  
to as a float ...



## Eaton 9390 Integrated

## Battery Cabinet (Models IBC-S ...



Aug 16, 2024 · The Integrated Battery Cabinet (IBC) systems are housed in single free-standing cabinets. Two models are available: Model IBC-S (small cabinet) and Model IBC-L (large ...

---

## Lithium-Ion UPS FAQs , Mitsubishi Electric

Aug 15, 2025 · Lithium-Ion FAQ Have questions about lithium-ion UPS batteries? We've got answers. Check out the below FAQs to learn everything you need to know about lithium-ion ...



---

## Can we keep UPS on floor? - ProfoundAdvice

Can we keep UPS on floor? In terms of raised access floors, an uninterruptible power system and its battery cabinet can be considered a static load. Some thought has to be given to the initial ...



---

## Lithium batteries for UPS applications

Feb 26, 2025 · Traditional UPS

applications are characterized by infrequent transfers to battery and relatively short discharge times when they do occur. This is typically referred to as a float ...



## What Are the Essential UPS Battery Rack Maintenance and ...

Mar 11, 2025 · Essential PPE includes arc-rated face shields (8 cal/cm<sup>2</sup> protection) and voltage-rated tools (1,000V CAT III). For lithium-ion racks, add Class 2 ESD straps and oxygen ...

## Guidelines for storage & usAGE of lead acid batteries

May 19, 2022 · To prevent the failure and the battery dry out, the safety valves open and the battery vents hydrogen until temperature and/or voltage are reduced. This condition can be ...



## UPS/DC Battery Room,





## Equipment Installation Requirements ...

Battery room floor shall be covered with an electrolyte (acid or alkali) resistant, durable, antistatic and slip-resistant surface overall, to a height 100 mm on each wall.

---

## Stationary UPS Sizing Calculations - Part Seven

5 days ago · Floor loading of UPS will vary based on the capacity and the type of the UPS. If there is a raised floor, the weight of the entire UPS system may require a concrete base to be ...



---

## Installation Environment and Clearance Requirements

Ensure that the floor or installation support can bear the weight of the UPS, batteries, and battery racks. If the UPS is equipped with a top outlet kit, do not install devices that are easy to swing ...

---

## Eaton 93PM Integrated Battery Cabinet-Large and Large ...



Mar 31, 2025 · This manual contains important instructions that should be followed during installation and maintenance of the UPS and batteries. Read all instructions before operating ...

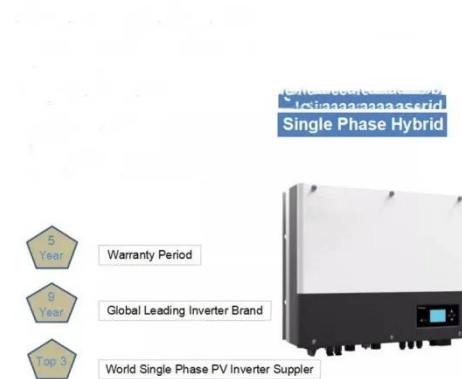


## Stationary Storage Battery Systems , UpCodes

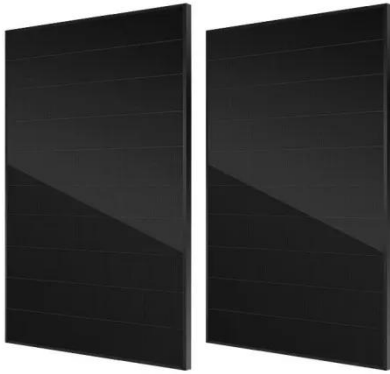
Stationary storage battery systems shall not be located in areas where the floor is located more than 75 feet (22 860 mm) above the lowest level of fire department vehicle access, or where ...

## UPS Battery Room Maintenance and Precautions

Apr 10, 2025 · Consistent inspection and monitoring of your ups battery are crucial to avoid unexpected failures and extend their operational life. Regular Checks: Inspect batteries weekly ...



## Eaton UPS design environmental storage and operating ...



Mar 3, 2025 · Do not store UPSs in areas where conditions such as dampness (i.e., on a dirt floor), changes in temperature, dust, dirt, rubble, paint, conductive particulates, or corrosive ...

---

## Just bought my first UPS. Where is a safe place ...

Feb 22, 2011 · I bought a APC UPS XS 1300 today, and I currently have it set up on the floor next to my desk (see pic below.). The floor is carpeted. Is it safe to ...



---

## 164201687\_1085\_Rev\_4\_Web

Feb 28, 2024 · The Integrated Battery Cabinet (IBC) systems are housed in single free-standing cabinets. Model 1085 or 1085HR with a single battery voltage range is available to meet ...

---

## Contact Us

For catalog requests, pricing, or partnerships, please visit:

<https://www.posecard.eu>