

## SolarTech Power Solutions

# What battery is best for a 6000w inverter



## Overview

---

Tubular lead-acid batteries are ideal if you want a best battery for inverter that can withstand deep discharge cycles, ensuring a longer lifespan and reliable performance over time. Which battery is best for an inverter?

There are two kinds of batteries when it comes to powering inverters: lead-calcium batteries and lithium-ion batteries. Each battery has its pros and cons; let's look at each and see which is best for an inverter. Lithium-ion batteries are far superior to their lead-acid counterparts in overall performance, longevity, and maintenance.

Which battery is best for a sine wave inverter?

Deep-cycle batteries work best for your sine wave inverters. Here's why: They can get discharged and recharged multiple times and produce steady power over an extended period. Deep-cycle batteries have low internal resistance. So, they don't get hot when you charge them up with solar power, unlike other lead-acid batteries.

What are backup batteries for inverters?

Backup batteries for inverters come in two basic options, lead-acid batteries or lithium-ion batteries—each works of a slightly different chemical composition that creates the electrical reaction inside it. Let's look at lead-acid batteries first and establish which backup situation would be a better choice than lithium-ion batteries.

What voltage should a 12V inverter run on?

The input voltage of the inverter should match the battery voltage. (For example 12v battery for 12v inverter, 24v battery for 24v inverter and 48v battery for 48v inverter Summary What Will An Inverter Run & For How Long?

.

How many 12V batteries do I Need?

If the battery is rated 100 DC Amp-hours, you need four 12V batteries to run these devices for two hours. Now that you have all the info on battery options and calculating the inverter and battery sizes, you are ready to go ahead and get your power back system done.

How much battery do I need to run a 3000-watt inverter?

You would need around 24v 150Ah Lithium or 24v 300Ah Lead-acid Battery to run a 3000-watt inverter for 1 hour at its full capacity Here's a battery size chart for any size inverter with 1 hour of load runtime Note! The input voltage of the inverter should match the battery voltage.

## What battery is best for a 6000w inverter

---

Our Lifepo4 batteries can beconnected in parallels and in series for larger capacity and voltage.

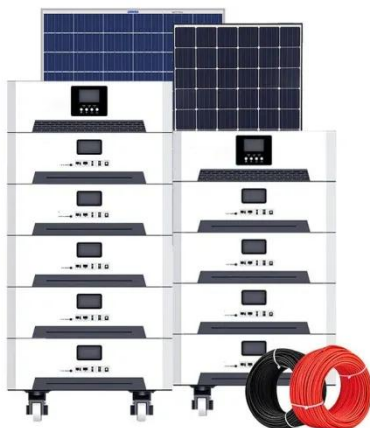


### Back-up Generator for 6000xp

May 17, 2023 · I'm setting up an off-grid system with a single 6000xp inverter and lifepower4 back-up batteries and am looking for a back-up generator. I know the manual says that a generator ...

## Best Battery for Inverter: Which One Should You Choose?

Jan 14, 2024 · So, which battery is best for your inverter? The answer depends on your specific needs and preferences. If you're looking for the most cost-effective option, a Lead-Acid battery ...



### 3000W Solar Inverter Guide 2025: Reviews, Installation & Sizing

Jul 17, 2025 · Complete guide to 3000W solar inverters. Compare top models, learn installation basics, and find the perfect inverter for your off-grid system. Expert tested reviews included.

## Wattage vs Voltage vs Current on Inverter Ratings

Jul 6, 2024 · It isn't unreasonable to put 9000W of panels on a 6000W inverter, likely will rarely reach 6000W output without drawing from battery. 12,000W of panels oriented one direction ...



## 9 Best Solar Inverters: In-Detail Reviews ...

Aug 27, 2023 · Since solar inverters are so critical, it's important to get the right one. That's why we looked at more than 20 different inverter models to come ...

## What Battery Is Best for Inverters? A Comprehensive Guide

Dec 11, 2023 · Choosing the right battery for an inverter is crucial for ensuring efficient power supply and longevity. The best batteries for inverters typically include deep cycle lead-acid ...



## Which Inverter Battery Is Best (Calculated Options)



Oct 6, 2022 · There are two kinds of batteries when it comes to powering inverters: lead-calcium batteries and lithium-ion batteries. Each battery has its ...

## Best Rating Inverter Battery [Updated: August 2025]

Aug 3, 2025 · Having tested several models myself, I've learned that a good inverter battery should combine seamless power delivery with smart safety features. The AIMS Power ...



## Which Battery Is Best for an Inverter? - leaptrend

Mar 28, 2025 · Capacity & Runtime: Match the battery's Ah (ampere-hour) rating to your power needs. Lifespan: Lithium-ion batteries typically last 2-3x longer ...

## 2 6000 watt inverter or 1 12000 watt inverter, Pro's Con's?

Oct 4, 2021 · A single 6000W inverter is likely to have lower background consumption than a 12k inverter, though I would guess that two 6000W inverters on at the same time might have ...



## Which Inverter Is Best for a 200Ah Battery?

Dec 7, 2023 · Choosing the best inverter for a 200Ah battery depends on several factors, including power requirements, efficiency, and specific use cases. A suitable inverter will ...

## How Many Solar Panels Do I Need For a 6000 ...

Aug 3, 2023 · A 6000W inverter might have an efficiency of around 95%. Divide the total daily Wh production by the inverter efficiency to get the final daily Wh ...



## Ultimate Guide to the 3kW LF Inverter: Power, Battery Sizing, ...



May 2, 2025 · Reliable and efficient, the 3kW LF inverter is ideal for homes, RVs, and solar systems. Protects sensitive devices with pure sine wave output. Learn more now!

---

## Calculate Battery Size For Any Size Inverter (Using Our ...

Aug 24, 2023 · What type and size of battery is best for inverter? Lead acid, gel and lithium battery, what's the difference? Keep reading and choose the best ...



---

## Contact Us

For catalog requests, pricing, or partnerships, please visit:  
<https://www.posecard.eu>