

## **SolarTech Power Solutions**

# **What are the container-type 5G base stations**



## Overview

---

What are the different types of 5G NR base stations?

This article describes the different classes or types of 5G NR Base Stations (BS), including BS Type 1-C, BS Type 1-H, BS Type 1-O, and BS Type 2-O. 5G NR (New Radio) is the latest wireless cellular standard, succeeding LTE/LTE-A. It adheres to 3GPP specifications from Release 15 onwards. In 5G NR, the Base Station (BS) is referred to as a gNB.

What is a 5G base station?

A 5G Base Station is known as a gNode B (next 'generation' Node B). This is in contrast to a 4G Base Station which is known as an eNode B ('evolved' Node B), and a 3G Base Station which is known as a Node B. Figure 21 illustrates two Standalone (SA) Base Station architectures, known as 'option 2' and 'option 5'.

What are the 3GPP specifications for 5G NR base stations?

The 3GPP specifications define several classes of 5G NR base stations:  
Frequency Range: Operates in FR1. Requirements: Conducted requirements at individual antenna connectors. Use Case: Suitable for macro and small cell deployments where the focus is on conducted measurements. Frequency Range: Operates in FR1.

What is 5G NR BS?

5G NR (New Radio) is the latest wireless cellular standard, succeeding LTE/LTE-A. It adheres to 3GPP specifications from Release 15 onwards. In 5G NR, the Base Station (BS) is referred to as a gNB. These 5G NR BS operate in two frequency ranges: FR1 and FR2. (././assets/5G-NR-BS-Channel-Bandwidths.jpg). Table 1: Frequency Ranges.

Can NSA base stations evolve from 4G to 5G?

NSA Base Stations can provide an evolution path from 4G to 5G. Figure 22

illustrates two configurations for Non-Standalone Base Stations using the 4G Core Network. These configurations, known as 'option 3' and 'option 3a', can be deployed before introducing the 5G Core Network.

What are local area base stations?

Local area base stations are characterized by requirements derived from picocell scenarios with a BS to minimum coupling loss equal to 45dB. Requirements throughout the RF specifications are in many cases defined separately for different frequency ranges (FR).

## What are the container-type 5G base stations

---



### Types of 5G NR Base Stations: A Comprehensive Overview

Conclusion The evolution of 5G NR base stations has paved the way for enhanced connectivity, higher data speeds, and improved network efficiency. Each type of base station serves a ...

---

### Technical Requirements and Market Prospects of 5G Base ...

Jan 17, 2025 · 5G base station chips play a critical role in the construction of 5G networks. As technology continues to advance, base station chips will demonstrate higher performance and ...



### Quick guide: components for 5G base stations and antennas

Mar 12, 2021 · 5G technology manufacturers face a challenge. With the demand for 5G coverage accelerating, it's a race to build and deploy base-station components and

antenna mast ...

## Types of 5G NR Base Stations and Their Roles in

...

May 7, 2025 · These base stations are the backbone of the 5G infrastructure, enabling ultra-fast connectivity, low latency, and massive device deployment. ...



## 5g base station architecture

Dec 13, 2023 · 5G (fifth generation) base station architecture is designed to provide high-speed, low-latency, and massive connectivity to a wide range of devices. The architecture is more ...

## 5G Cell Types: PCell, PSCell, SCell, and SpCell

In the 5G era, cell types like PCell, PSCell, SCell, and SpCell are vital for achieving high-speed data transfer, low latency, and seamless connectivity. These cell types are designed to handle ...



## Applications



## Macrocell vs. Small Cell vs. Femtocell: A 5G introduction

Oct 20, 2023 · 5G networks also use macrocells, such as cell towers, for connectivity. These larger base stations enable lower 5G frequencies, compared to small cells' high-frequency ...

## Learn What a 5G Base Station Is and Why It's Important

In essence, a 5G base station is a very sophisticated cell tower that connects your device-terms like phones and IoT devices-to the much larger 5G network. Unlike their 4G counterparts, 5G ...



## Learn What a 5G Base Station Is and Why It's Important

A 5G base station is the heart of the fifth-generation mobile network, enabling far higher speeds and lower latency, as well as new levels of connectivity. Referred to as gNodeB, 5G base ...

**China home to 4.25 million**

## 5G base stations

Jan 22, 2025 · The number of 5G base stations in China has hit 4.25 million, with the number of gigabit broadband users surpassing 200 million, official data showed Tuesday. More than ...

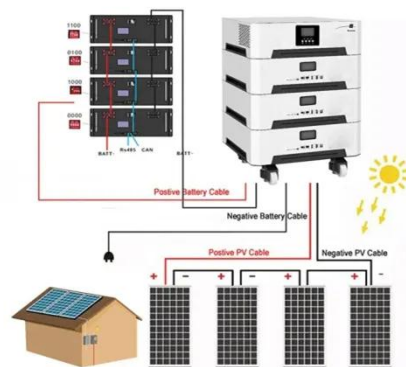


## Unveiling the 5G Base Station: The Backbone of Next-Gen ...

Jun 3, 2025 · A 5G base station, also known as a 5G Node B (gNodeB) or a 5G Next Generation Node B (gNB), is a critical component of the 5G Radio Access Network (RAN). It serves as the ...

## 5G Network Architectures and Technologies

Aug 1, 2025 · In NSA networking, 5G base stations cannot be deployed independently, requiring LTE base stations to be used as anchor points on the control plane for access to the core ...



## Types of 5G NR Base Stations: A Comprehensive



## Overview



- ✓ 100KW/174KWh
- ✓ Parallel up-to 3sets
- ✓ IP Grade 54
- ✓ EMS AND BMS

Mar 26, 2025 · telcomatraining - As 5G technology continues to revolutionize the telecommunications industry, different types of 5G New Radio (NR) base stations have ...

---

## Contact Us

For catalog requests, pricing, or partnerships, please visit:  
<https://www.posecard.eu>