

SolarTech Power Solutions

Substation battery cabinet installation site



Overview

What are the requirements for a substation battery system?

Substation battery systems shall be dedicated to connected DC load and shall not be part of a plant UPS or other DC system. Working space of at least 1 meter shall be provided in front of each battery rack or enclosure. Batteries shall be supplied with covers for all inter-cell connectors and terminals or insulated copper busbars to enhance safety.

How to install a battery cabinet?

Check the battery cabinet placement against the construction drawing. Ensure there is maintenance space and a distance of more than 0.5 meters from heat sources. Follow the battery installation diagram and manual for installation. Wipe dust off battery terminals and check that each bolt is tightened before installing connection bars.

Where should a stationary battery be installed?

Stationary batteries shall be installed on open battery racks within a battery room to facilitate proper cooling, routine inspection, and maintenance. Covers for all inter-cell connectors and battery terminals or insulated copper busbars shall be supplied as part of the battery to enhance safety.

Why do substations need reliable energy storage solutions?

With the power utility landscape changing in terms of both architecture and methods of generation, the need for reliable energy storage solutions is growing. Substations are evolving and adapting to support new and varied generation sources including renewables.

How do switchgear and substation power systems work together?

Switchgear and substation power systems work together to deliver electric power and reduce potential downstream faults ensuring safe electrical power. With the power utility landscape changing in terms of both architecture and

methods of generation, the need for reliable energy storage solutions is growing.

How to install a battery?

Batteries are pre-charged before leaving the factory. Wrap all metal installation tools with insulating tape to prevent short circuits. Maintain a gap between batteries during installation for good heat dissipation. Clarify the installation method and load-bearing conditions before starting. 2. Installation Steps

Substation battery cabinet installation site



Product and specifications
The image shows two white battery cabinets standing side-by-side. Each cabinet has a control panel on the top right corner and a small display screen. The cabinets are designed for substation battery installation.

Product and specifications
The image shows two white battery cabinets standing side-by-side. Each cabinet has a control panel on the top right corner and a small display screen. The cabinets are designed for substation battery installation.

UPS / DC Equipment and Battery Rack, Installation and

3 days ago · Follow the battery installation diagram and manual for installation. Wipe dust off battery terminals and check that each bolt is tightened before installing connection bars. ...

Tips for Designing Battery Cabinets/Enclosures , SBS Battery

Jan 16, 2025 · Calculating Cabinet Height Chargers need room to breathe and batteries need extra room above for maintenance (watering and testing). To calculate the minimum height of ...

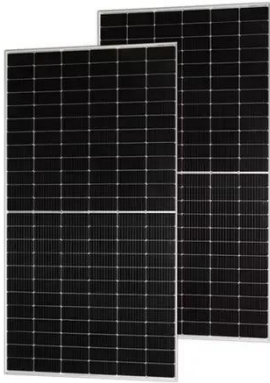


Maintenance BestPractices & Intervals for Substation

...

Oct 24, 2017 · Maintenance BestPractices & Intervals for Substation Equipment Presented by: Paul Schlies, President/CEO Energis High Voltage

Services, Inc.



Utility-scale battery energy storage system (BESS)

Mar 21, 2024 · Introduction Reference Architecture for utility-scale battery energy storage system (BESS) This documentation provides a Reference Architecture for power distribution and ...

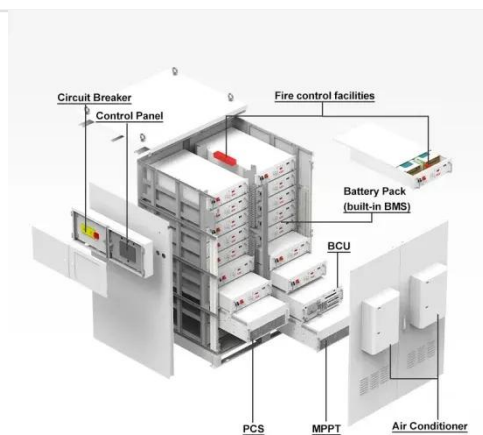


Designing Industrial Battery Rooms: Fundamentals and ...

Designing Industrial Battery Rooms: Fundamentals and Standards Industrial battery rooms require careful design to ensure safety, compliance, and operational efficiency. This article ...

MS For Battery Installation , PDF , Electrical ...

Nov 18, 2024 · By adhering to these quality control measures, the substation can ensure the reliable and safe operation of the battery installation, minimizing ...

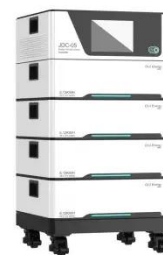


Auxiliary DC Control Power System Design for Substations

at make up the auxiliary dc control system are required. Many references for stationary battery system design address only a specific battery technology, making it difficult to compare ...

Substation Battery Systems Present & Future

Apr 29, 2024 · The substation batteries for the DC system must be in operation 24/7 - 365 - NOT just for backup power, but also to provide the current needed for day-to-day switching operations



Batteries and Battery Chargers in Major



Substations

Jun 6, 2024 · Design Criteria - Batteries
Design philosophy to ensure sufficient capacity to make safe substation on loss of AC supply. In addition the ability to supply high current transient ...

EAGLE EYE TECHNICAL NOTE

Apr 26, 2025 · The battery model numbers, date codes, batch numbers, installation date, and other pertinent information should be clearly visible or available on site. The cell/unit numbers ...



The BESS System: Construction, Commissioning, ...

3 days ago · The guide is divided into three main sections: construction and installation, commissioning, and operation & maintenance. It covers various ...



Understanding the Essential Site

Requirements for Battery

...

Nov 19, 2024 · What are the key site requirements for Battery Energy Storage Systems (BESS)? Learn about site selection, grid interconnection, permitting, environmental considerations, ...



Contact Us

For catalog requests, pricing, or partnerships, please visit:
<https://www.posecard.eu>