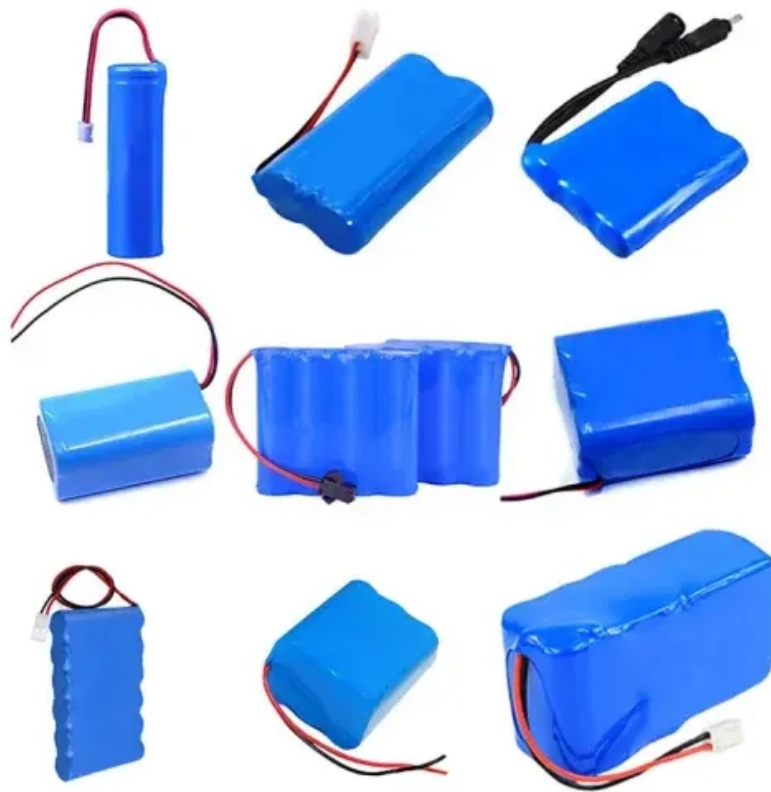


SolarTech Power Solutions

Photovoltaic panel glass clamp



Overview

What are SPC frameless & mid & end clamps made of?

And they are made of double glass, it's fragile if it's not protect well during installation / transportation even in day-to-day working status . SPC frameless mid & end clamps are made of premium aluminum and apply EPDM rubbers inside , they work as cushion during frameless PV modules and fixing clamps .

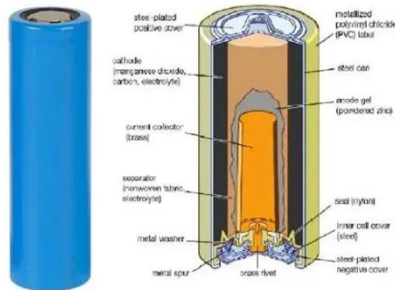
What is a double glass frameless solar panel?

Double-Glass Frameless Design, robust and does not require module grounding . The key feature of this frameless solar panel is only 6 mm (0.02 ft) in thickness . And they are made of double glass, it's fragile if it's not protect well during installation / transportation even in day-to-day working status .

Do you need grounding with EPDM rubber insided clamps?

No grounding needed with our EPDM rubber insided clamps ; – Good fire protetion & moisture barrier ; – Compatible with other ground / roof mounting structures just changed with our frameless clamp type ; – Low down total cost with our frameless clamps than typical framed module project .

Photovoltaic panel glass clamp

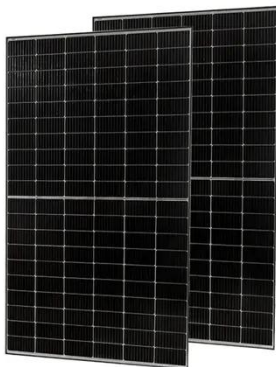


fischer Non-assembled central clamp MCG 100 5,0-6,2

MCG is the non-assembled clamp for fixing frameless glass PV panels. The MCG clamp is available in different lengths and in two thickness variants to adapt to different models of ...

CEA recommendations for mitigating glass breakage - pv ...

Jul 28, 2025 · Clean Energy Associates has investigated glass breakages at utility-scale solar sites across three continents. It has found that there isn't a single root cause, but a perfect ...

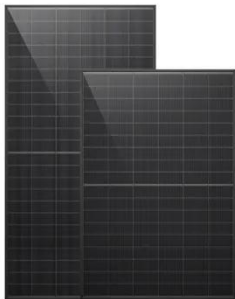


Double clamp photovoltaic panel installation skills

How do I install a double glass PV module? Insert the PV module into the clamp, and make sure the module edge touch to the EPDM closely and then tighten the nut with uniform torque ...

Photovoltaic panel tightening torque standard table

For framed PV module, the clamp must overlap the module frame at least 8 mm (0.32 inch) but no more than 11 mm (0.43 inch). The cross section of clamp can be adjusted if the module is ...

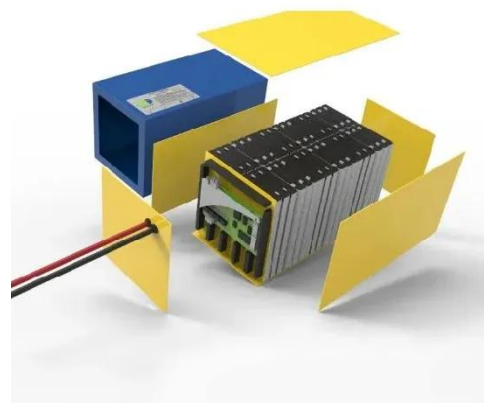


What Is a Mid Clamp in Solar? - AHODSOLAR

Jan 7, 2025 · SIC Solar Role in Mid Clamp Solutions SIC Solar, a reputable manufacturer of photovoltaic mounting systems, offers a broad selection of high-quality mid clamps suitable for ...

Photovoltaic panel clamp installation tutorial drawings

Insert the PV module into the clamp, and make sure the module edge touch to the EPDM closely and then tighten the nut with uniform torque values using a qualified torque wrench to ensure ...



CEA recommendations for

mitigating glass breakage - pv ...



Jul 28, 2025 · Clamp smarter. Harmonize clamp design and spacing with the actual glass and frame properties of modern modules. Push for better traceability.

Solar range/Clamps and gauges for photovoltaic ...

Jul 8, 2024 · CHARACTERISTICS Simple clamp for solar panel fixing. In EN AW 6005-T6 anodised extruded aluminium. For outside use. Support areas with toothed surface for better grip.



Contact Us

For catalog requests, pricing, or partnerships, please visit:
<https://www.posecard.eu>