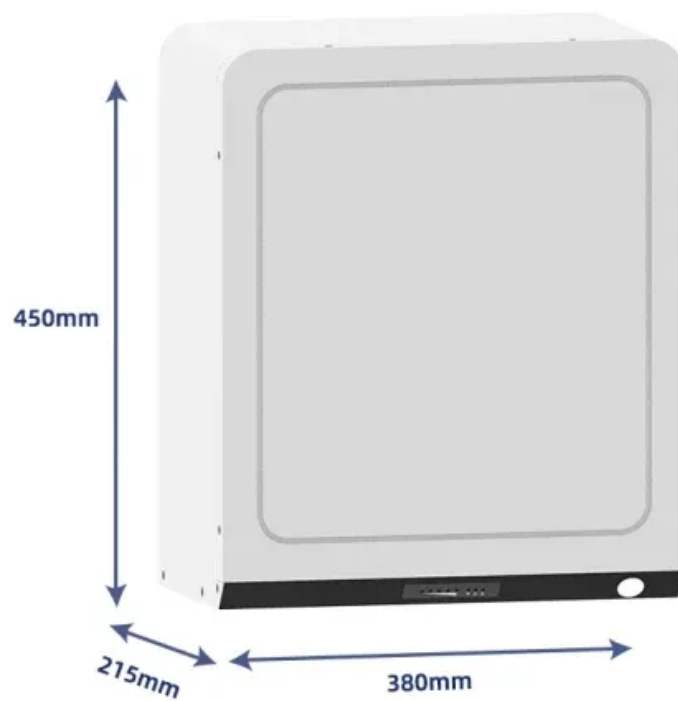


SolarTech Power Solutions

Photovoltaic panel container weight per square meter



Overview

The wattages of solar panels can range greatly. While some solar panels power select appliances or RVs, others are powerhouses, and others can power industrial buildings. These solar panels differ in both size and weight. On average, a solar panel can.

Here are some quick facts about the average weight of solar panels with differing wattages: 1. 100-watt solar panels from 5 of the most popular brands average 18.8.

The roofs of current homes can safely support about 20 pounds per square foot. Including the mounting equipment, residential solar.

Generally, typical solar panels weigh around 10 kg to 20 kg or 22 to 44 pounds per square meter. Your rooftop be it an apartment building or single-family home, can take this amount of weight. How much does a solar panel weigh?

Generally, a solar panel weighs around two to four pounds per sq. ft. Most residential solar panels are 65 inches by 39 inches in size. So, the weight of a typical solar panel in a residential building is around 40 pounds. So, now you can understand how much weight your rooftop has to tolerate for solar panels.

How much does a thin film solar panel weigh?

Thin-Film Solar Panels: Due to a different technology, thin-film solar panels are lighter than crystalline ones. For example, a thin-film solar panel of the same size could weigh anywhere from 5.4 to 9 kilograms (or 12 to 20 pounds).

How much does a residential solar system weigh?

Here is a summary of a residential solar system's typical weight: Solar Panels: The weight of solar panels for a residential system can vary from 40 to 60 pounds (18 to 27 kilograms) per panel, as was previously mentioned. Your energy requirements and the amount of space you have determine how many panels you need.

How much do solar panels & mounting equipment weigh?

The typical solar panels and mounting equipment weight is between 10 and 20 kilograms per square meter. This is well within the tolerances of most roofs, meaning there is no need to worry about the extra weight causing any damage. The weight of the panels is often used as an advantage, as it helps to hold the panels in place during high winds.

How much does A 72-cell solar panel weigh?

72-cell solar panels weigh around 61.73 pounds. As you may recall, these larger panels usually provide 350 to 400 watts. The weight of a solar panel per unit is an important consideration when deciding which size is best for your home, which we will discuss further in a later section.

How much does a 60 cell solar panel weigh?

Similar 60-cell polycrystalline panels typically weigh between 37 and 45 pounds (17 to 20 kilograms), which is a little less than monocrystalline panels. Thin-Film Solar Panels: Due to a different technology, thin-film solar panels are lighter than crystalline ones.

Photovoltaic panel container weight per square meter



Standard Solar Panel Sizes And Wattages (100W ...

2 days ago · The average solar panel output per area is 17.25 watts per square foot. Let's say that you have 500 square feet of roof available for solar panel ...

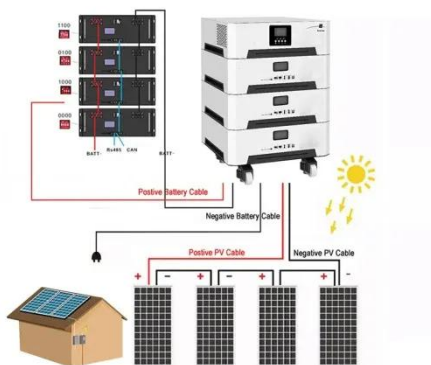
Weight per Square Meter of Flexible Photovoltaic Panels A ...

Why Panel Weight Matters in Solar Applications When selecting flexible photovoltaic (PV) panels, the weight per square meter directly impacts installation feasibility and energy efficiency. ...



How much weight does a photovoltaic panel weigh per ...

Jun 13, 2023 · If we know that 1 square foot of a solar panel weight 2.25 lbs and has a rated wattage of 17.25 watts, we can calculate the how much any solar panel (100W, 200W, 300W, ...



Weight of solar photovoltaic panels per square meter

Solar Panel Weight Impact on Roof: 5 Key Factors to Consider To understand the impact of solar panel weight on a roof, it's best to consider the structural capacity of the roof, especially its ...

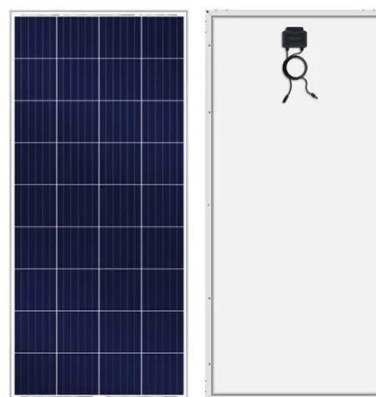


Solar Panel Sizes, Dimensions & Weight , Solar ...

Feb 7, 2024 · Solar Panel Sizes - How big are solar panels? This is a question many homeowners ask when they are considering installing a solar system. ...

How Much Does A Solar Panel Weight?

Aug 6, 2022 · A solar panel's weight consists of two things, the solar panel and its installation or mounting equipment. Generally, a solar panel weighs around two to four pounds per sq. ft.



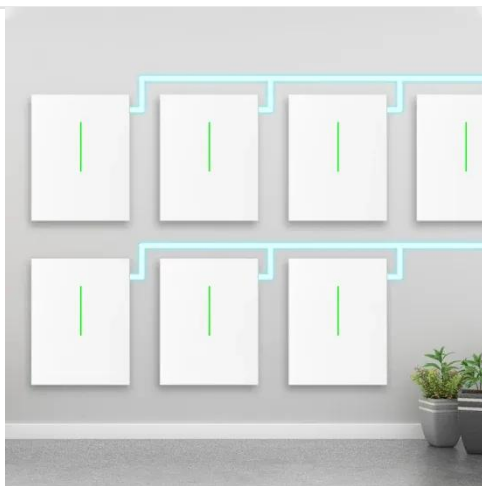


How to calculate the weight of a single square meter ...

72-cell solar panels weigh around 61.73 pounds. As you may recall, these larger panels usually provide 350 to 400 watts. The weight of a solar panel per unit is an important consideration ...

How heavy is a photovoltaic panel per square meter

How much does A 72-cell solar panel weigh? 72-cell solar panels weigh around 61.73 pounds. As you may recall, these larger panels usually provide 350 to 400 watts. The weight of a solar ...



How much does a photovoltaic panel weigh per square ...

Solar photovoltaic (PV) cells (6-inch by 6-inch squares) are solar panels' crucial building blocks. A residential solar panel usually has 60 or 72 PV cells, while a commercial panel generally has ...

How much weight does a

photovoltaic panel weigh per ...

Jun 13, 2023 · 72-cell solar panels weigh around 61.73 pounds. As you may recall, these larger panels usually provide 350 to 400 watts. The weight of a solar panel per unit is an important ...



Sample Order
UL/KC/CB/UN38.3/UL



Photovoltaic solar panels per square meter

What is solar panel efficiency? Solar panel efficiency is crucial for a solar power system's success. High-efficiency panels convert more sunlight into electricity, boosting overall output. To ...

The weight of double-glass photovoltaic panels per ...

The combined strength of using two sheets of glass makes the solar panel less prone to becoming deformed or for microcracks to form in the cells. there was a trade-off in using ...



Detailed analysis of solar panel weight and ...

Apr 29, 2024 · The solar panel weight



depends on a number of factors, including the solar panel weight and other factors to ensure the safe operation of the plant.

Understanding the Weight of Photovoltaic Panel Support per Square Meter

Meta Description: Discover how the weight of photovoltaic panel support per square meter impacts solar installations. Learn about material choices, structural requirements, and cost ...



The weight of double-glass photovoltaic panels per ...

Positive power tolerance: 0~+3% - This means that the actual power output of the solar panel can be up to 3% higher than its rated power, providing additional energy generation potential.

Calculation of weight per meter of photovoltaic bracket

3. How to calculate the solar panel weight. The solar panel weights varies depending on the material, size, bezel material, etc. Solar panel weight is mainly composed of



Calculation of weight per meter of photovoltaic bracket

To calculate the distributed load, we need to divide the total weight of the solar panel system (including panels and mounting hardware) by the total array area we've calculated. This gives ...

Weight of photovoltaic panels per square meter

The average residential PV panel measures about 65 inches by 39 inches. Including mounting equipment will add about 40 pounds to your roof. For a full 6kW array, you will need about 20 ...



How Much Does a Solar Panel Weigh?



Aug 13, 2025 · Understanding the weight differences between solar panel types is crucial for successful solar energy system design and implementation. Average weight of different types ...

Comprehensive weight of solar photovoltaic panels per square meter

The standard solar panel weight in the UK is 18 - 21kg for residential settings and 22 - 30kg for commercial settings. These include the weights of the frames and mounting equipment. Most ...



Contact Us

For catalog requests, pricing, or partnerships, please visit:
<https://www.posecard.eu>