

SolarTech Power Solutions

New Zealand communication base station EMS closed



Overview

How long will New Zealand's emergency services communications network last?

Estimates are that the radio communications network currently used by New Zealand's emergency services frontline responders won't last past next year. "Over the past 20 years, the requirement for a refresh of the communications technology and infrastructure has been deferred resulting in a material infrastructure deficit.

What will New Zealand's new digital communications network mean for emergency service workers?

A new digital communications network for emergency service workers will roll out from next year, marking the most significant advance in New Zealand's public safety communications in decades, Police Minister, Chris Hipkins, announced today.

What is the New Zealand Public Safety Network?

The Public Safety Network is the new communications service for New Zealand's frontline emergency services responders being rolled-out from mid-2023. Fire and Emergency, Police, Hato Hone St John and Wellington Free Ambulance will be the network's first users and there is scope for other government agencies to join in the future.

Will New Zealand's emergency services rollout last past 2022?

An earlier briefing in December 2022 mentioned risks to the rollout because of the availability of spectrum (radio frequency) and resourcing challenges. Estimates are that the radio communications network currently used by New Zealand's emergency services frontline responders won't last past next year.

How will land mobile radio work in New Zealand?

"Reliable, secure-modern communications are vital to frontline responders.

The new Land Mobile Radio network will help coordinate these services, for the safety, wellbeing and prosperity of all New Zealanders.” The network will be fully encrypted, meaning only emergency services personnel can access transmissions.

What is New Zealand's new mobile radio network?

The network is made up of three main solutions: Cellular, Personal Alerting, and Land Mobile Radio. The latter is the core of the new network, a new land mobile radio service, which was supposed to already be up and running in Canterbury, with Wellington soon to be completed. Tasman was supposed to then follow in September.

New Zealand communication base station EMS closed



Communications-EMT -- Hopper Institute®

Communication in EMS is essential. Patients must be able to access the system, the system must be able to dispatch units, EMTs must have a means of communicating with medical direction ...

New radio network for first responders , Beehive.govt.nz

Aug 28, 2024 · Cellular Roaming (live since July 2023) now has 14,000 emergency services users who can roam across Spark and One NZ networks, and Cellular Priority will be live in late ...



Simulation and Classification of Mobile Communication Base Station

Dec 16, 2020 · In recent years, with the rapid deployment of fifth-generation base stations, mobile communication signals are becoming more and more

complex. How to identify and classify ...

Enhancing BESS Efficiency with Advanced EMS: Features, ...

Sep 28, 2024 · The primary role of EMS in BESS is to provide centralized control and monitoring across the energy storage station. EMS integrates with Power Conversion Systems (PCS), ...

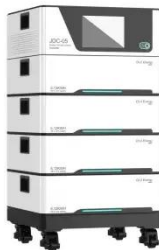


✓ IP65/IP55 OUTDOOR CABINET

✓ OUTDOOR MODULE CABINET

✓ OUTDOOR ENERGY STORAGE CABINET

✓ 19 INCH

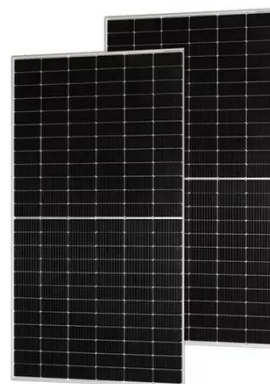


The Critical Communications Review

Aug 5, 2025 · Next Generation Critical Communications (NGCC), responsible for overhauling New Zealand's emergency services communications network, has announced significant progress ...

Tait to Deliver P25 Nationwide Critical Communications EMS ...

Nov 10, 2022 · Tait Communications and Kordia, in partnership, have won a contract to build and maintain a secure digital land mobile radio communications network across New Zealand, a ...





Chapter 5: Communication Flashcards , Quizlet

Oct 4, 2024 · Study with Quizlet and memorize flashcards containing terms like base station, Where should base stations be located?, What are components of an Emergency ...

Significant communications investment to keep emergency ...

Nov 10, 2022 · A new digital communications network for emergency service workers will roll out from next year, marking the most significant advance in New Zealand's public safety ...



Chapter 5 Communication Questions Flashcards , Quizlet

One role of the FCC in EMS communications systems is to a. purchase base-station radio equipment. b. license base stations. c. serve as a repeater for base-station operations. d. ...

Contact Us

For catalog requests, pricing, or partnerships, please visit:
<https://www.posecard.eu>