

SolarTech Power Solutions

Load requirements for photovoltaic glass



Overview

What are the optimal design parameters for a glass-glass PV module?

This study finds the optimal design parameters of the support structure consisting of two C-Channel that support the Glass-Glass PV module having thin glass on top and SLG at the bottom. Based on analysis described here, it was found that optimal channel location from free edges is close to $L/5$ that gives mechanical reliability of 0.99.

What standards are included in a photovoltaic system?

In addition to referencing international electro-technical photovoltaic standards such as IEC 61215, IEC 61646 and IEC 61730, typical standards from the building sector are also included, such as: EN 13501 (Safety in case of fire); EN 13022 (Safety and accessibility in use); EN 12758 (Protection against noise).

Does flat glass improve photovoltaic (PV) panel efficiency?

Flat glass transparency, low-iron glass improves photovoltaic (PV) panel efficiency. This segment emphasizes on energy efficiency and sustainability. Refs. [35, 36]. Based on in-depth analyses of market size, trends, and growth projections. Table 1. Flat glass market. augmented reality and advanced display technologies.

What is laminated Solar Photovoltaic Glass?

This document specifies requirements for appearance, durability and safety as well as test methods and designation for laminated solar photovoltaic (PV) glass for use in buildings. Laminated solar photovoltaic glass is defined as laminated glass that integrates the function of photovoltaic power generation.

Which materials are used in photovoltaic panels?

The remaining 20 –25% encompassed fiberglass (including reinforcement, insulation, and mineral wool fibers) and specialty glass manufacturing . Flat

glass transparency, low-iron glass improves photovoltaic (PV) panel efficiency. This seg- emphasis on energy efficiency and sustainability. Refs. [35, 36].

What are the safety standards for PV modules?

The standard defines the basic safety test requirements and additional tests that are a function of the PV module end-use applications. Test categories include general inspection, electrical shock hazard, fire hazard, mechanical stress, and environmental stress. Status: Currently valid standard, but due for regular ISO review.

Load requirements for photovoltaic glass



Building-integrated photovoltaic applied Bi-facial photovoltaic ...

Jun 1, 2024 · Mechanical load testing of the commercial large-area glass-to-glass photovoltaic module was conducted by increasing the load incrementally, starting at 2400 Pa and ...

Mechanical Reliability Calculations for the Thin Specialty ...

Aug 24, 2023 · This study provides important design guidance to the Photovoltaic (PV) solar panel development efforts using the finite element based computations of the PV module ...



Solar Photovoltaic Glass Market Size, Demand, Opportunities ...

The global solar photovoltaic glass market size is expected to reach USD 179.08 billion by 2033, growing at a CAGR of 29.87% from 2025 to 2033 And

Asia Pacific dominates the market.



Mechanical Reliability Calculations for the Thin Specialty ...

Solar power utilizes either direct (Photovoltaic (PV) cells) or indirect (lens/mirror tracking) method to convert the sunlight energy into electricity (Chu and Meisen, 2011). In the direct method, ...



Photovoltaic Module

Jan 9, 2025 · Do not expose the PV module to excessive loads on the surface of the PV module or twist the frame. Do not hit or put excessive load on the glass or back sheet, this may break ...

JA SOLAR PV MODULES INSTALLATION MANUAL

Jan 29, 2019 · Rooftop PV systems should only be installed on rooftop to be capable of handling the additional weighted load of PV system components, including modules, by a certified ...



MINIMUM TECHNICAL SPECIFICATIONS OF SPV POWER ...

Dec 16, 2019 · Definition:- A Grid Tied Solar Rooftop Photo Voltaic (SPV) power plant consists of SPV array, Module Mounting Structure, Power Conditioning Unit (PCU) consisting of ...

Photovoltaic panel tempered glass load-bearing

typical glass solar panel needs a 45mm frame. Glass by itself is not strong enough to meet the IEC / UL mechanical load strength requirements (2400pa). Tempered or not, glass is breakable. ...



PV Module Safety and Performance Standard ...

Jan 15, 2020 · Dynamic response Natural frequencies for all modes



Technical specification requirements for photovoltaic panel ...

Aug 23, 2021 · The front glass shall meet the following specifications: The facing glass must thickness shall be min 3.2 mm Textured to trap more light The glass shall have an Anti-reflective ...



Analysis of requirements, specifications and regulation ...

Apr 15, 2020 · This document specifies requirements for appearance, durability and safety as well as test methods and designation for laminated solar photovoltaic (PV) glass for use in buildings.



Glass/glass photovoltaic

module reliability and degradation: ...

Aug 3, 2021 · Abstract Glass/glass (G/G) photovoltaic (PV) module construction is quickly rising in popularity due to increased demand for bifacial PV modules, with additional applications for ...

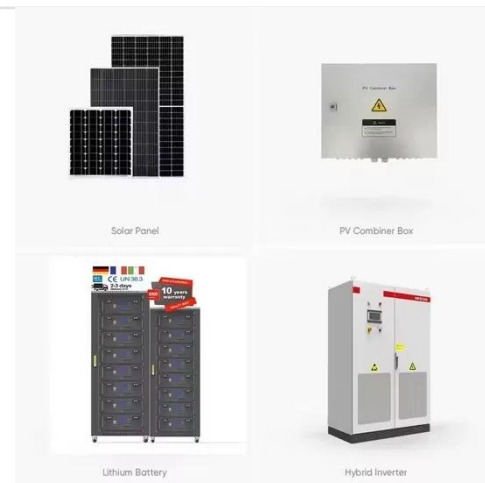


Curtain walls

Aug 14, 2025 · Description Technical characteristics Vidursolar glass-glass PV modules are perfectly suitable for fitting as curtain wall as they meet all the requirements for façades of this ...

The structure of photovoltaic glass solar panels

Solar glass serves as another vital component of a solar panel, forming the outermost layer. It must possess durability and a reflective surface to enhance the panel's performance. Solar ...



Structural Loads for Solar PV Systems and Buildings



...

Jan 28, 2022 · Rain Load Ponding Check for Buildings with PV For very low-slope roofs, ponding of rainwater can cause excessive deflection, leading to progressive failure. Ponding check is ...

What are the requirements for photovoltaic panel glass ...

What is Photovoltaic Glass? Photovoltaic (PV) glass is revolutionizing the solar panel industry by offering multifunctional properties that surpass conventional glass. This innovative material not ...

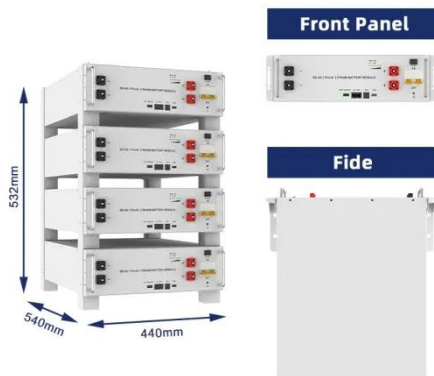
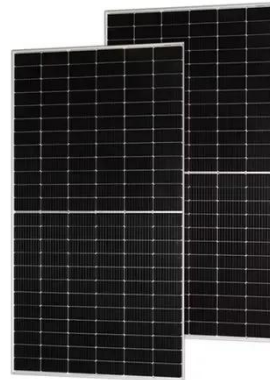


Wind Load Calculations for PV Arrays

4 days ago · It is important to evaluate equipment and attachment methods to ensure that PV equipment will remain attached to structures during windstorm events, and that additional ...

(PDF) Glass Application in Solar Energy Technology

May 3, 2025 · This chapter examines the fundamental role of glass materials in photovoltaic (PV) technologies, emphasizing their structural, optical, and spectral conversion properties that ...



NGA Presents Updated Resource on Glass Properties ...

Mar 28, 2025 · NGA has published an updated Glass Technical Paper (GTP), FB39-25 Glass Properties Pertaining to Photovoltaic Applications, which is available for free download in the ...

Assessment of long term reliability of photovoltaic glass-glass modules

Apr 1, 2015 · Quantifying the reliability of photovoltaic (PV) modules is essential for consistent electrical performance and achieving long operational lifetimes. ...



Contact Us

For catalog requests, pricing, or partnerships, please visit:
<https://www.posecard.eu>