

SolarTech Power Solutions

Inverter connected to photovoltaic panel



Overview

Why should I connect my solar panel to an inverter?

Connecting your solar panel to an inverter is important in harnessing solar energy for daily use. An inverter transforms the direct current (DC) electricity produced by the PV solar panels into alternating current (AC) electricity (the standard form used by most home appliances).

Can you connect PV panels to an inverter?

The use of photovoltaic (PV) panels, which convert sunlight into power, has seen exponential growth in recent years. An inverter is a crucial part of every solar power system because it transforms solar energy into usable electricity. So, let's explore the intricacies of connecting PV panels to an inverter.

Can a 12V inverter be directly connected to a solar panel?

Yes, a 12V inverter can be directly connected to a solar panel. However, the direct connection is not commonly recommended because solar panels do not provide a stable voltage output. To ensure a stable power supply, it's advantageous to use a charge controller between the PV solar panel and the inverter.

How do I connect my solar panels to an inverter?

The first step in connecting your solar panels to an inverter is thorough planning and preparation. Assess your energy needs, identify an optimal location for both solar panels and the inverter (with access to direct sunlight and proximity to the electrical panel), and obtain any permits or approvals required by local authorities.

What type of inverter is used for solar panels?

The type of inverter used for solar panels depends on how it is connected to them. You can use string inverters, microinverters, and power optimizers. Once you have wired your solar panels in the desired configuration, you need

to connect them to the inverter using the appropriate connectors and cables. Here are the connection steps to follow:.

How to choose a solar inverter?

The size of the inverter should be based on the maximum power output of the solar panels. When sizing an inverter, it is important to consider the maximum power output of the solar panels, the DC voltage of the solar panels, and the power factor of the inverter.

Inverter connected to photovoltaic panel

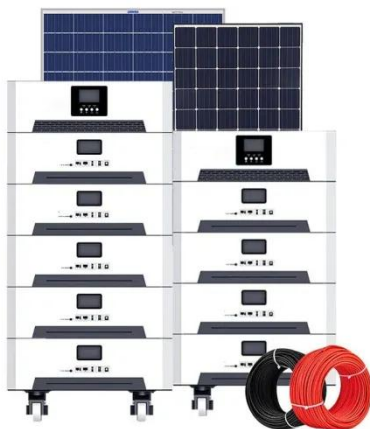


Photovoltaic Basics (Part 2): Integrating the ...

Sep 30, 2024 · To effectively harness solar energy, it's essential to understand how to properly configure the components of a system. This article focuses on ...

How to add an inverter to a solar panel

Mar 27, 2024 · To effectively incorporate an inverter into a solar panel system, the process involves a few critical steps, including 1. Understanding the role of the ...

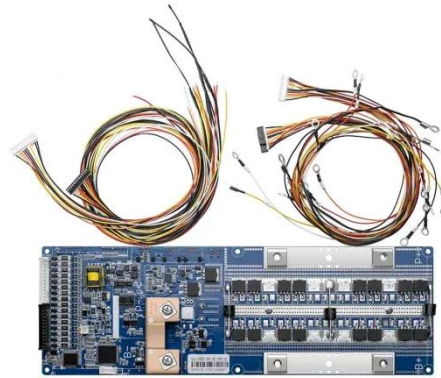


Wiring solar panels to inverter + diagram

Jul 16, 2025 · Solar inverter wiring is a crucial part of any solar energy system as it connects the solar panels, inverters, batteries, and other components so that ...

Solar Integration: Inverters and Grid Services Basics

4 days ago · Types of Inverters There are several types of inverters that might be installed as part of a solar system. In a large-scale utility plant or mid-scale ...



How To Install Solar Inverters

Feb 11, 2025 · String inverter A string inverter consists of a central inverter unit that is "stringed" with the solar panels, all connected back to the inverter. A typical string inverter can handle up ...

Can I connect an inverter directly to a solar panel

May 27, 2025 · Direct Connection: It is technically possible to connect an inverter directly to a solar panel, but it is not recommended without proper system ...



Control technique for single phase inverter photovoltaic ...



Feb 1, 2020 · In photovoltaic system connected to the grid, the main goal is to control the power that the inverter injects into the grid from the energy provided by the photovoltaic generator.

...

4 Steps to Connect Solar PV to Domestic Electrical Supply

4 days ago · Solar PV systems require minimal maintenance, but regular inspections of panels, inverters, and wiring are advised to ensure optimal performance. Cleaning the panels ...



How a Grid-tied PV System Works with Hybrid ...

Dec 19, 2022 · The synergistic application of grid-connected photovoltaic (PV) systems and hybrid solar inverters provides strong support for the efficient use ...

how to connect solar panel to inverter

Aug 26, 2024 · Connecting solar panels to an inverter is a critical step in harnessing solar energy for use in homes, businesses, or off-grid setups. The process involves several components, ...



How To Connect Solar Panels to an Inverter

Connecting solar panels to an inverter is essential in any home solar system. This article explores the different types of inverters available and explains step-by-step instructions for connecting ...

Contact Us

For catalog requests, pricing, or partnerships, please visit:
<https://www.posecard.eu>