

## SolarTech Power Solutions

# Inverter charging voltage is low



## Overview

---

The first thing that you should do is make sure there is actually power going into the inverter. Without power, the system will not charge. If you are on a grid tied system there should be power from the grid. Or you might be using a generator or another source, just be certain the inverter is.

If your battery is dead or rapidly running out of power, it will no longer be able to carry a charge. Even assuming that the battery might start charging, the voltage will quickly drop, making it impossible to run any load. If you suspect your battery is dead, check for the.

The inverter cables to the battery must be the right size and has to be secure. A loose terminal wiring will result in a system failure and the.

A typical inverter charger requires the voltage to be above 11.5V, assuming the inverter is 12V. If the voltage is lower than this, the system electronics will not be able to initiate a charge.

Fuses can blow for a variety of reasons, the most common being a short circuit when running a power load. A fuse can also explode or even melt if the inverter is overloaded. An.

What is inverter low voltage?

Now that we know what inverter low voltage is, let's explore some common causes behind it. One prevalent cause could be a faulty battery. An old or damaged battery may not be able to provide sufficient power, leading to low voltage from the inverter. Another possible cause could be an inadequate power source or improper electrical connections.

Why does my inverter not charge a battery?

If an inverter fails to charge a battery the most likely reason is low voltage due to faulty wiring or a dead battery. If replacing the batteries and wires does not resolve the problem, the inverter internal circuits might be damaged. Let us take a look at the other possible reasons why an inverter fails to charge batteries.

## Why is my inverter low voltage?

Another possible cause could be an inadequate power source or improper electrical connections. Faulty wiring can also result in voltage fluctuations. If you are experiencing inverter low voltage problems, it's essential to diagnose the issue accurately. Start by checking the battery health.

## What voltage should an inverter charger be?

A typical inverter charger requires the voltage to be above 11.5V, assuming the inverter is 12V. If the voltage is lower than this, the system electronics will not be able to initiate a charge. The Ultrapower Battery Load Tester can check the status of your battery. Some batteries can also be charged via AC power.

## Does a hybrid inverter/charger have low voltage protection?

Both our standard inverter and hybrid inverter/chargers have low voltage protections. In a hybrid inverter, you may get warning about "battery low voltage" or "battery over-discharge", and in a standard system your charge controller and inverter may show a fault or shut off due to low battery voltage.

## What happens if a battery inverter fails?

Over time, batteries can lose their ability to hold a charge effectively, leading to a malfunctioning inverter. Inadequate battery capacity can also cause the inverter to get into trouble when it comes to charging the battery, as the inverter may be unable to supply the necessary amount of power to charge the battery fully.

## Inverter charging voltage is low



## What are the Low Voltage and High Voltage Protection of Inverters?

Jul 2, 2025 · What are the low voltage protection and high voltage protection of off grid inverter? Let Xindun Power make it clear: the object of the above protection setting is the battery, not ...

## 7. Trouble Shooting Table

Jan 6, 2025 · 7. Trouble Shooting Table  
Proceed as follows for quick detection of common faults. DC loads must be disconnected from the batteries and the AC loads must be disconnected ...



## Voltage Troubles? A Guide to Diagnosing Inverter Low Voltage ...

Dec 17, 2023 · Solutions for Inverter Low Voltage Problems Now that we have identified some potential causes, let's explore the solutions for inverter low voltage problems. Firstly, if your ...

## 5. Operation

Nov 2, 2022 · The inverter will automatically restart, after a minimum delay of 30 seconds, when the battery voltage has increased above the "Low battery restart" parameter. After three ...

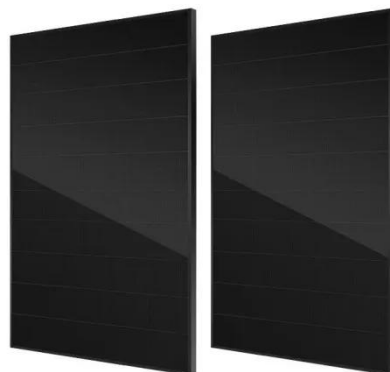


### Voltage Troubles? A Guide to Diagnosing Inverter Low Voltage ...

Dec 17, 2023 · One prevalent cause could be a faulty battery. An old or damaged battery may not be able to provide sufficient power, leading to low voltage from the inverter. Another possible ...

### Victron inverter complaining about low battery when there ...

Aug 7, 2020 · I've got a Multiplus II 48/3000. Since a large storm the inverter won't turn on, it simply lights up the low battery light and it stays lit. My voltage on the terminals is 54v and I ...



### Inverter battery not



## charging: Common problems and solutions

Jan 14, 2024 · If your inverter battery is not charging, one of the common problems could be low battery voltage. When the battery voltage is too low, the inverter may have trouble charging it.

---

## Why Is My Inverter Not Charging My Lithium Battery?

Mar 11, 2024 · If your inverter is not charging your lithium battery, several factors could be at play, including compatibility issues, connection problems, or even environmental conditions. ...



---

## Inverter Battery Charging Mode: Causes, Concerns, And ...

Mar 23, 2025 · When battery voltage is low, the inverter senses this and activates its charging system. For example, if the battery voltage falls below 12 volts for a 12-volt system, the ...

## Inverter Low Voltage Cutoff--Why SO low?

Aug 23, 2022 · Why do these inverters allow the battery to discharge to 10V (or lower)? Is it due to some difference between "resting" voltage and in-use voltages? Is there a general consensus ...

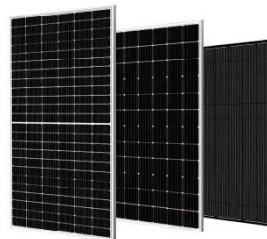


## General Inverter Troubleshooting , Magnum Dimensions

4 days ago · General Inverter Troubleshooting The following is a quick reference for Magnum Energy inverter/charger to diagnose typical symptoms. Always refer to your full user manual.

## Why is my inverter shutting off due to "battery low voltage"?

Jun 24, 2021 · Both our standard inverter and hybrid inverter/chargers have low voltage protections. In a hybrid inverter, you may get warning about "battery low voltage" or "battery ...



## Do Inverters Turn Off When

## Voltage is too low?



Oct 26, 2021 · Group, If my batteries drop too low and the grid is off will an inverter turn off (stop outputting AC current)? I want to verify it will shut off and not provide dangerously low voltage ...

## How to Fix Inverter Battery

Apr 5, 2025 · Signs include the inverter failing to provide backup power, low voltage readings, or the battery losing charge quickly after charging. In some cases, you may notice physical ...



## Inverter not Charging

Jul 29, 2024 · Is your inverter not charging? Discover common reasons like battery issues, wiring problems, and more in this comprehensive guide. Learn troubleshooting tips to restore power ...

## Low voltage bus error.

Nov 26, 2019 · I have not worked with a voltronic, but the MPP, Growatt, and EG4 inverters are close cousins, and 'Low Bus Voltage' almost always means the

voltage it is reading for the ...



## Contact Us

---

For catalog requests, pricing, or partnerships, please visit:  
<https://www.posecard.eu>