

SolarTech Power Solutions

How to pair the inverter with lithium battery



Overview

How do you connect a lithium battery to an inverter?

BMS Communication Link: Most lithium batteries come with a built-in BMS that can communicate with the inverter. Ensure that this link is properly established by connecting the BMS output to the corresponding input on the inverter.

Should you pair a lithium-ion battery with an inverter?

Before you decide to pair a lithium-ion battery with your existing inverter, it's essential to consider several factors. These include the inverter's voltage, charging algorithm, and overall compatibility with lithium-ion technology. Not all inverters are created equal.

Are all inverters compatible with all lithium batteries?

Not all inverters are compatible with all lithium batteries. Therefore, it is crucial to ensure that the inverter you choose is designed to work with the specific type of lithium battery you plan to use. Check Manufacturer Specifications: Both the battery and inverter manufacturers typically provide a list of compatible products.

Do inverters and batteries need to match?

The inverter and batteries must match in terms of voltage, capacity, and power output. If you are using a 12V battery, then the input voltage of the inverter must match the battery voltage. If the specifications of the battery and the inverter do not match, the system will not operate stably and may even damage the equipment.

Can a solar inverter be used with a lithium battery?

Integrating a solar inverter with a lithium battery can take your renewable energy setup to the next level. This combination allows for better energy storage, improved efficiency, and greater resilience during power outages.

LiFePO₄ batteries are particularly well-suited for solar applications because their thermal stability and long cycle life.

Do inverters need to be connected to batteries?

Connecting inverters to batteries is an important part of an off-grid power solution or backup power system, and the right connections ensure that the system runs efficiently.

How to pair the inverter with lithium battery



How to Choose the Right Inverter for Lithium Batteries?

Apr 11, 2025 · Answer: To choose the right inverter for lithium batteries, match the inverter's voltage and capacity to your battery's specifications, prioritize pure sine wave inverters for ...

Seamlessly Pair Lithium Batteries with Hybrid Inverters: A ...

Jan 20, 2025 · This comprehensive guide will walk you through the steps to seamlessly pair a lithium battery with a hybrid inverter, ensuring a smooth setup and long-term reliability.



How Do Inverters Work? - JMBatteries

Jul 15, 2025 · Inverters are essential components in solar energy systems, home energy storage, and off-grid power setups. But how exactly do they convert stored DC power from lithium ...



How To Connect Inverter With Battery?

Jun 23, 2025 · Step-by-Step Process For Inverter Battery Connection. Place the lithium storage battery and whole house solar inverter close to each other to minimize cable length and power ...

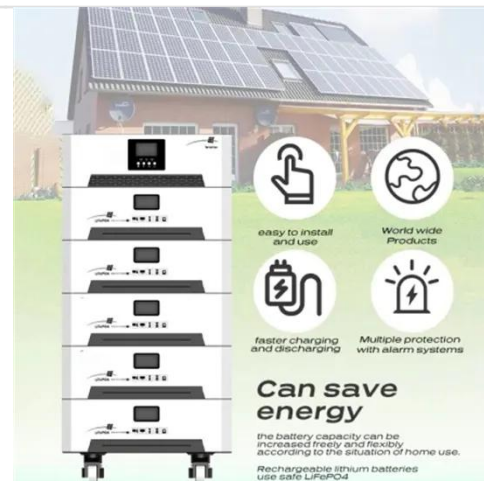


Connecting Inverters and Batteries for Maximum Efficiency

Jul 6, 2024 · Connecting an inverter to two parallel batteries, learning how to connect two inverter generators in parallel, and understanding the nuances of connecting two inverters in parallel ...

How Lithium-Ion Batteries Work with Current Solar Inverter ...

Jan 15, 2025 · Learn how lithium-ion batteries pair with solar inverters to boost energy efficiency, improve storage, and enhance your solar power system. Explore the benefits and simple steps ...





How to Safely Connect a Battery to an Inverter: A ...

Apr 13, 2025 · Learn how to safely connect your batteries to your inverter with our guide. Avoid common wiring mistakes to optimize performance and extend ...

How to Safely Connect a Battery to an Inverter: A ...

Apr 13, 2025 · The first thing to do before you start making connections is to make sure that the inverter and batteries are compatible with each other. The ...



What Are the Factors to Consider When Pairing a 200Ah Lithium Battery

Oct 28, 2024 · When pairing a 200Ah lithium battery with an inverter, consider the inverter's wattage rating, the battery's voltage, the peak and continuous power requirements, and the ...

How to Connect the Battery With Your

Appliance - LiTime-US

Learn how to connect your lithium battery to inverters and appliances the right way in this step-by-step tutorial. Safety is the top priority as our expert guides you through the full process. Watch ...



Battery Compatibility Guide: Pairing Lead-Acid and Lithium Batteries

May 22, 2025 · Lithium batteries are gaining popularity thanks to their lighter weight and higher energy density. Pairing lithium batteries with your HWO inverter offers advantages like faster ...

How to Determine What Size Inverter You Can Run Off a 100Ah Battery

Determining the appropriate size of an inverter that can be run off a 100Ah battery involves understanding both the power output of the inverter and the energy capacity of the battery. A ...



What Size Inverter Can I Run Off a 100Ah Battery? A



...

Aug 13, 2024 · When selecting an inverter to pair with a 100Ah battery, it's crucial to understand the power requirements of your appliances and the capabilities of your inverter. The right ...

How to Ensure the Inverter and Battery You Purchase Are ...

Aug 19, 2025 · When choosing an inverter and battery, it's essential to compare key specifications, match technology types, and verify communication protocols for optimal ...



Can I Connect Inverter to Lithium Battery?

Oct 31, 2024 · Yes, you can connect an inverter to a lithium battery. Lithium batteries, particularly Lithium Iron Phosphate (LiFePO4) batteries, are well-suited for use with inverters due to their ...

How to connect inverter to battery: a step-by ...

Nov 20, 2024 · Connecting an inverter to a battery is a crucial step in setting up a reliable off-grid power solution or backup energy system. This setup ensures ...



How to Install a Lithium Battery System Safely and Efficiently?

Apr 11, 2025 · Installing a lithium battery system is a critical process that demands attention to safety protocols, proper tools, and environmental considerations. Whether integrating with ...

Contact Us

For catalog requests, pricing, or partnerships, please visit:
<https://www.posecard.eu>