

SolarTech Power Solutions

How to connect the communication base station to electricity



Overview

What is a communication base station?

Communication base station setups will usually include a wide array of different technologies, including power supplies, data servers, head end, radio repeaters, and communication systems that allow for high-speed continuous information flow. It can also be used as part of a leaky feeder system in the communication network.

How do I connect a base station?

Base Station Connection and Routing — Fully insert the Power Cable and Interface (I/F) Cable connectors into their respective ports in the underside of the Base Sta-tion. Then connect to an AC Adapter, and plug the AC power cord into the (wall) outlet. Figure 5. Connecting the Base Station.

What are the components of a base station?

Power Supply: The power source provides the electrical energy to base station elements. It often features auxiliary power supply mechanisms that guarantee operation in case of lost or interrupted electricity, during blackouts. **Baseband Processor:** The baseband processor is responsible for the processing of the digital signals.

How does a mobile station communicate with a base station?

The communications between mobile station and base station occur concurrently via two air interface channels from each base station separately. Both channels (signals) are received at the mobile station by maximal combining Rake processing (see Figure 11.20). Soft handoff occurs in about 20–40% of calls. Figure 11.20. Soft handoff in CDMA.

How to set up the base station and transmitter?

To set up the base station and transmitter, first insert 2XAA 1,5V alkaline rechargeable batteries into the battery compartment of the remote sensor.

Then, insert 3XAA 1,5V alkaline batteries into the base station, observing the correct polarity.

How does a base station work?

It usually connects the device to other networks or devices through a dedicated high bandwidth wire or fiber optic connection. Base stations typically have a transceiver, capable of sending and receiving wireless signals; Otherwise if they only send the trailer it will be considered a transmitter or broadcast point only.

How to connect the communication base station to electricity



Solar Powered Cellular Base Stations: Current Scenario, ...

Dec 17, 2015 · Cellular base stations powered by renewable energy sources such as solar power have emerged as one of the promising solutions to these issues. This article presents an ...

Telecommunication base station system working principle ...

Jan 13, 2024 · The monitoring unit can also connect to the local computer through RS485 or TCP network cable direct connection. System composition
A. MPPT Photovoltaic Module: The ...



Multi-objective cooperative optimization of communication base station

Sep 30, 2024 · In the above model, by encouraging 5G communication base stations to engage in Demand Response

(DR), the Renewable Energy Sources (RES), and 5G communication base ...

Communication Base Station Energy Storage Systems

Powering Connectivity in the 5G Era: A Silent Energy Crisis? As global 5G deployments surge to 1.3 million sites in 2023, have we underestimated the energy storage demands of modern ...

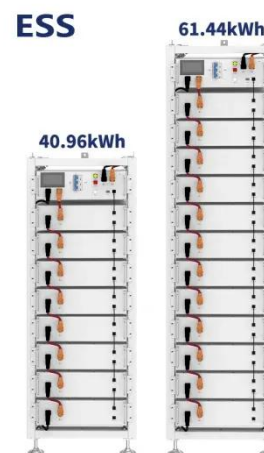


Experimental study on the cooling and electricity-saving ...

Jan 1, 2025 · The cooling requirements of communication base stations (CBSs) align with the effects of radiative cooling coatings. However, these effects have not b...

Collaborative optimization of distribution network and 5G base stations

Sep 1, 2024 · In this paper, a distributed collaborative optimization approach is proposed for power distribution and communication networks with 5G base stations. Firstly, the model of 5G ...



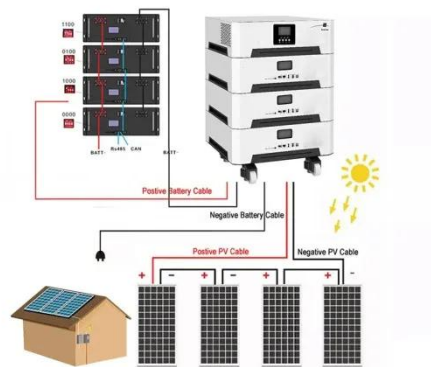


How to connect solar photovoltaic base station , NenPower

May 22, 2024 · To connect a solar photovoltaic (PV) base station, specific methodologies must be applied to ensure efficiency and safety throughout the process. 1. Assess the site for optimal ...

Resource management in cellular base stations powered by ...

Jun 15, 2018 · Energy management strategies are studied in the realm of smart grids and other technologies, increasing the possibilities for energy efficiency further by employing schemes ...



Solar communication base station photovoltaic power

...

Cellular base stations powered by renewable energy sources such as solar power have emerged as one of the promising solutions to these issues. This article presents an overview of the state ...

Communication Base Station Energy Solutions

With the expansion of global communication networks, especially the advancement of 4G and 5G, remote communication base stations have become increasingly critical. Many remote areas ...



Contact Us

For catalog requests, pricing, or partnerships, please visit:
<https://www.posecard.eu>