

## SolarTech Power Solutions

# How many watts of solar panels can be matched with a 30A 12V battery



## Overview

---

For example, if you have a 12V system, your controller can handle  $12V * 30A = 360$  watts. Solar panels come in different wattages, typically ranging from 100 watts to 400 watts. How many solar panels do I need for a 30 amp controller?

This will also affect the number of panels you need. Calculating the number of solar panels you need for a 30 amp controller involves a few steps. This is calculated by multiplying the voltage of your system by the amperage of your controller. For example, if you have a 12V system, your controller can handle  $12V * 30A = 360$  watts.

How many watts of battery do I Need?

Ideally, a battery bank of four 200ah batteries with 1kw of panels is best, or around 600ah of battery power. 2kw of panels (8x 250-watt panels, 6x 330 panels, 3x 615-watt panels), and up to ten 200ah batteries. 4kw of panels (12x 330-watt panels, 6x 615-watt panels), and 2,400ah of battery storage.

How many watts can a 100/30 charge?

Yes, you can use either of those panels with the 100/30. You can use both panel types but the 100/30 can give you max. 30A charging current. So you already have enough power with the 250Wp panels. Is there a limit as to how many watts the 100/30 can accept?

I understand it won't output more than 30A. But let's say I hook up 800-1000W of panels.

How many watts can a solar controller handle?

This is calculated by multiplying the voltage of your system by the amperage of your controller. For example, if you have a 12V system, your controller can handle  $12V * 30A = 360$  watts. Solar panels come in different wattages, typically ranging from 100 watts to 400 watts. You'll need to know the wattage of the panels you plan to use.

How much power does a 12 volt battery need?

However, a 12v battery can be as small as 50aH or as big as 200aH, so the amp hour rating of your battery is most important. With that said, you'll need a panel that is delivering between 13.6 and 17 volts, and depending on your battery's ah rating and your power needs, we recommend a panel of at least 100 watts.

How many watts in a solar panel?

$1,000 / 5 = 200$  Watt solar panel. Now that we have our solar panel size figured out it is time to calculate the amp hour rating for the batteries you will need to keep your specified load running under all conditions. Let's say you choose a battery that is rated at 12 volts then you would do the following calculation:

## How many watts of solar panels can be matched with a 30A 12V bat



### How many panels can I use?

Feb 28, 2022 · As Kev has already pointed out, you'll need to know the full specs of the panels to determine how many you can add to a given MPPT controller. For panels in series, the voltage ...

## Solar Panel To Battery Ratio (Kw + Watts)

Mar 27, 2025 · To charge a 12V battery with a capacity of 100 amp-hours in five hours, you need at least 240 watts from your solar panels (20 amps x 12 volts). A 300-watt solar panel or three ...



### Lithium battery parameters

Product capacity: 100Ah

Product size: 135\*197\*35mm

Product weight: 1.82kg 197mm / 7.7in

Product voltage: 3.2V

internal resistance: within 0.5



## How to Correctly Calculate Solar Panel, Inverter, ...

Jun 14, 2025 · To figure out exactly what size solar panel batteries charge controller and inverter you will need we have to carefully calculate and set up ...

## Do I need a 30A or 40A SCC? Calculators disagree .

Aug 10, 2020 · Victron prefers you over-panel their controllers, but 30A is enough. At  $30A \times 14.4V = 432W$ . If the 2/3 thing is a rule, I've never read that in a SCC's manual, and Victron's ...



## Maximum Watts With Smart Solar 100/30

Jun 4, 2020 · Yes, you can use either of those panels with the 100/30. You can use both panel types but the 100/30 can give you max. 30A charging current. So you already have enough ...

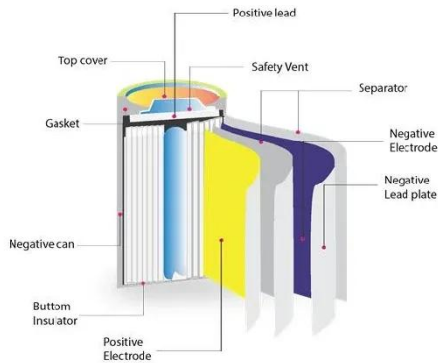
## DIY Guide to Running Appliances on Solar Power

How Many Solar Panels Do You Need? As we stated earlier, 20-30 solar panels can produce 900-1000kwh per month, the average power consumption of an American home. But the number ...



## How Many Watts Can a 10A Charge Controller Handle?

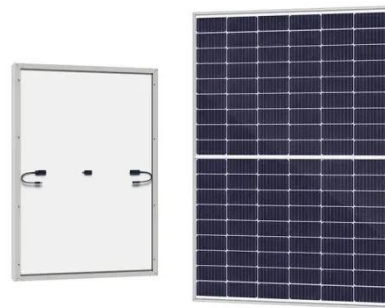
A charge controller ensures optimum



current goes into the battery without overloading it. This will only work if the controller is properly sized, so if you have a 10 amp charge controller, it must ...

## How many watts of solar panels are required for ...

Apr 23, 2024 · To determine the number of watts of solar panels needed for a 30-amp service, several crucial factors come into play. 1. Wattage Calculation, it's ...



## 400W Solar Panel Kit (DIY): What Size Battery, ...

Jun 27, 2023 · In this guide, you'll learn, how many batteries, What size charge controller, what size inverter & what size cable you'll need for a 400-watt solar ...

## Solar Load Calculator , How -many-solar-panels-do-i-need

5 days ago · This free tool calculates

your total energy usage and recommends the exact number of PV panels, inverter size in kW, and battery requirements. Just enter your appliance wattage ...



## How many solar panels can I use for a 30ah battery , NenPower

Oct 2, 2024 · When considering solar panel wattage, the output of each panel typically varies greatly, generally ranging from 100 watts to 400 watts. This variation is essential to ...

## What Size Charge Controller For a 300 Watt Solar Panel?

A 300 watt solar panel needs a charge controller to store power in the battery bank. If the controller is not properly matched with the panel it will not work, so knowing how to calculate ...



## How Many Watts of Solar Panel Do You Need to





## Charge a

Feb 18, 2025 · To charge a deep cycle battery efficiently, you need a solar panel with sufficient wattage based on the battery's capacity and energy consumption. A typical 12V 100Ah deep ...

## How Many Solar Panels To Charge A 12V Battery: Size, Time, ...

Mar 14, 2025 · To charge a 100 amp-hour battery at 12 volts and 20 amps, you need 240 watts of solar power. You can use one 300-watt solar panel or three 100-watt solar panels. This setup ...



## Solar Panel To Battery Ratio (Kw + Watts)

Sep 9, 2022 · Matching solar panel to battery size Let's take a look at the general rule of thumb mentioned earlier: a 1:1 ratio of batteries and watts. A 200-watt ...

## What Size Charge Controller Do I Need?



## (50-400W)

Aug 19, 2025 · A 20A, 100V MPPT can be used with 150W (3x 50W) or 200W (2x 100W) of 12V solar panels in either a series or parallel configuration to charge a 12V battery. Most single ...



## Contact Us

---

For catalog requests, pricing, or partnerships, please visit:  
<https://www.posecard.eu>