

## SolarTech Power Solutions

**How many times should the  
uninterruptible power supply be  
discharged**



## Overview

---

What are uninterruptible power supply hours?

Uninterruptible Power Supply hours refer to the duration a UPS can sustain power to connected devices during an outage. This time can vary widely based on several factors, including battery capacity, load requirements, and the UPS's efficiency. Knowing how to calculate this can help you select the right UPS for your needs.

How long does an uninterruptible power supply last?

Like all other IT equipment, an uninterruptible power supply (UPS) has a finite lifespan. The average expected lifecycle of a UPS is eight-to-ten years. The batteries typically need to be replaced at least three times during that lifespan. Of course, once a UPS reaches the end of its lifespan, it should be replaced to mitigate downtime.

How do you choose an uninterruptible power supply?

When choosing a uninterruptible power supply, IT teams can evaluate two criteria. One is the life of the unit itself – up to ten years. The second consideration is batteries. Every UPS unit has a battery, which as mentioned, must be replaced up to three times.

What is an uninterrupted power supply (UPS)?

An uninterrupted power supply (UPS) also referred to as a power system (UPS), is designed to provide electricity to a device in the event of a power outage or disruptions, in the power source. Knowing how long your UPS will run is key to reliable power systems; it is especially true for data centers or keeping important electronics on.

What are the different types of uninterruptible power supplies (UPS)?

In the first part of this article on Uninterruptible Power Supplies (UPS), we looked at the two main types of units, rotary and static, along with what

considerations need to be taken into account when selecting a suitable UPS system. Here, we continue our deep dive into UPSs, examining the run or hold-up time, battery types and sizing.

How long should a power supply last?

However, sometimes UPSs at edge computing sites that often have no IT staff on-site are overlooked, and units remain in place when nearing the end of life or even past their usefulness. When choosing a uninterruptible power supply, IT teams can evaluate two criteria. One is the life of the unit itself – up to ten years.

## How many times should the uninterruptible power supply be discha

---



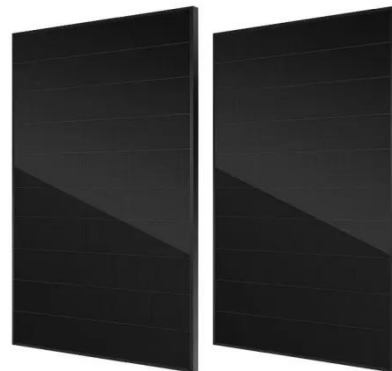
### What is battery deep discharge and how to prevent over ...

1. What is the meaning of deep discharge and over discharge of UPS battery? Deep discharge generally refers to the discharge of about 80% of the rated capacity of the battery. After the ...

### What is an uninterruptible power supply (UPS)? , Control ...

Nov 4, 2024 · An uninterruptible power supply (UPS) is a device that provides backup power to critical systems in the event of a power failure. Unlike a generator, which can take time to start,

...



### UPS Operation Time: Calculation and Optimization

Mar 6, 2025 · Calculating with an uninterrupted power supply calculator and optimizing UPS operation time is crucial for uninterrupted power. UPS

uptime means keeping power flowing ...



## Uninterruptible power supply (UPS)

Jul 11, 2024 · Batteries with a load discharged to a low battery state must be recharged within 72 hours after discharge to avoid battery damage; When the UPS power supply is idle and not in ...



**2MW / 5MWh**  
**Customizable**



## What is battery deep discharge and how to prevent over ...

Generally speaking, the discharge capacity of the battery must be controlled within 80% of the rated capacity. That is to say, when the battery discharges 80% of its rated capacity, it is not ...

## PQ Encyclopedia, Chapter

## 19: Application of Small ...

The uninterruptible power supply, or UPS, belongs in the energy storage category. The UPS is an electrical device designed to provide reliable power to a load should the normal input power ...



### Do you know how to use UPS uninterruptible power supply correctly UPS

Jul 7, 2019 · If the city power is not interrupted for a long period of time, the mains UPS should be artificially disconnected and discharged once every three months to extend the battery life.

### What problems should be paid attention to when UPS uninterruptible

3. If the UPS uninterruptible power supply itself has the automatic discharge function to set the time, it is recommended to let the UPS uninterruptible power supply to discharge by itself first, ...



**en\_Template-**

## WhitePaper\_01-20 dd

Apr 20, 2022 · The battery system connected to an Uninterruptible Power Supply (UPS) is key to its continuous operation. Without a well-maintained, quality battery system that will perform ...



## Uninterruptible Power Supply , UPS Systems Guide

Jul 21, 2025 · In many cases, fans and capacitors should be replaced at the same time, a process that is described as UPS overhaul. Smart cooling systems have fans that adjust their speed in ...

Our Lifepo4 batteries can be connected in parallels and in series for larger capacity and voltage.

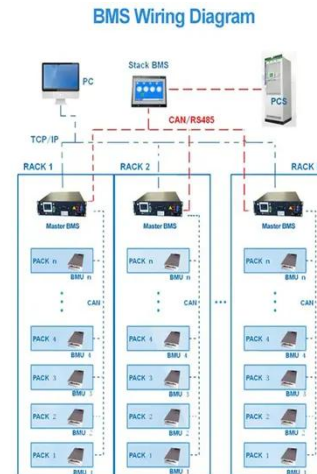


## UPS-UNINTERRUPTABLE POWER SUPPLIES

Feb 4, 2019 · Uninterruptible Power Supply Systems. There are three distinct types of uninterrupted power supplies, namely, (i) on-line UPS (ii) off-line UPS, and (iii) electronic ...

## Uninterruptible Power Supply Run Time

Uninterruptible Power Supply Run Time is the length of time a UPS system can provide backup power to connected devices during a power interruption. This run time acts as a buffer, giving ...



## Uninterruptible Power Supply Time:???????

Jun 25, 2025 · Learn how proper UPS time calculation ensures business continuity and data safety, with related keywords like backup power, voltage regulation, and energy efficiency.

## Do you know how to use UPS uninterruptible power supply correctly\_UPS

Jul 7, 2019 · First: too light load may cause deep discharge of the battery and reduce the battery life. Second: Proper discharge helps the activation of the battery. If the city power is not ...



## How to properly configure UPS uninterruptible power supply





Jul 7, 2018 · When we choose UPS uninterruptible power supply, we usually encounter how to configure the load equipment with a long delay and how much the UPS battery capacity can ...

## Uninterruptible Power Supply (UPS) Generic User Manual

Nov 21, 2024 · If the batteries were discharged, due to the fans operating for an extended interval of time, you may need to allow at least 8 to 12 hours for the batteries to properly re-charge.



## What Is an Uninterruptible Power Supply and How Does It ...

Feb 25, 2025 · An Uninterruptible Power Supply (UPS) is an electrical device providing emergency power during outages. It instantly switches to battery power when mains electricity ...

## How Long Do Uninterruptible Power

## Supplies Last?

How Long Do Uninterruptible Power Supplies Last? So how long does an Uninterruptible Power Supply last when the power goes down? The answer varies according to the size of the ...



## Contact Us

---

For catalog requests, pricing, or partnerships, please visit:  
<https://www.posecard.eu>