

## SolarTech Power Solutions

# How many photovoltaic panels are connected to the inverter



## Overview

---

How many solar panels can an inverter handle?

To effectively determine the number of solar panels an inverter can handle, you must first assess the size of your solar panel array. The overall capacity of your solar installation is defined by the wattage and number of panels. You can expect that the inverter should match or slightly exceed the combined wattage produced by the solar panels.

How many solar panels can a 5 kW inverter use?

You will also need to consider the wattage of the solar panels you plan to use. For example, if you have a 5 kW inverter and each of your solar panels is rated at 300 watts, you can calculate the maximum number of panels by dividing the inverter's capacity by the panel wattage:  $5,000 \text{ watts (inverter)} / 300 \text{ watts (panel)} = \text{approximately } 16.67$ .

How to choose a solar inverter?

You can expect that the inverter should match or slightly exceed the combined wattage produced by the solar panels. Therefore, if you have an array of 20 solar panels, each with a capacity of 300 watts, the total output will be 6000 watts, which is an important benchmark for choosing your inverter.

How many solar panels can a string inverter hold?

Most string inverters have 3 inputs that can hold 8 panels each for 24 in total. The specifications will vary so make sure to check the inverter before connecting any solar panel. Generally, an inverter can handle up to 30% more power than its rating. Given that solar panels do not always produce at peak power, this should not be an issue.

How many solar panels can a 600V inverter connect?

If an inverter has a maximum input voltage of 600V and each panel produces

40V, you could connect up to 15 panels in series ( $15 \times 40V = 600V$ ). Going over this voltage limit can harm the inverter or make it shut down, making your solar system less effective or even unusable. Equally important is the minimum input voltage.

What size solar inverter do I Need?

The size of your inverter will ultimately be determined by the wattage of your solar panel array and the amount of power you want to produce. A 3000-watt inverter is a good choice for most households who want to use solar power.

## How many photovoltaic panels are connected to the inverter



### How many inverters can photovoltaic panels be ...

You need at least one solar inverter. Depending on the size and type of solar panel array you choose, you may need more than one. Inverters convert the solar power harvested by ...

## How many photovoltaic panels are required for an inverter

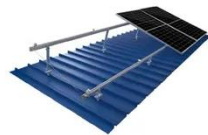
Can a 3000 watt inverter power a solar panel? watt inverter, you connect it to a 3000 watt solar array. The number of solar panels that make that energy may vary, but the most important ...



TILE ROOF SOLAR MOUNTING SYATEM



STANDING SEAM ROOF SYATEM



ADJUSTABLE TILT FLAT ROOF SYATEM



TRIANGLE FLAT ROOF SYATEM



### How many photovoltaic panels should be connected in a ...

A solar PV string is a series of solar panels connected in a sequence to form a circuit. The panels in a string are connected by their positive and negative terminals, creating a single path for the ...

## How Many Solar Panels Can Be Connected To Solar Inverter?

Mar 7, 2025 · The maximum solar input voltage of the inverter should be used as reference for calculation,  
 $450V \div 36V = 12.5$ , rounded down to 12  
panels,  $12 \times 36V = 432V$ , the total voltage  
...



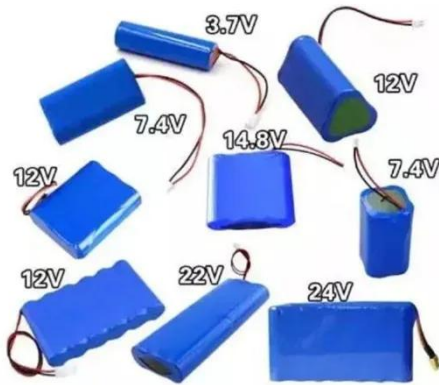
## Solar panel wiring basics: How to wire solar panels

5 days ago · In this article, we'll review the basic principles of wiring systems with a string inverter and how to determine how many solar panels to have in a ...

## How Many Solar Panels Can I Connect To An Inverter?

Generally speaking, most inverters have a maximum wattage rating that indicates how many solar panels can be safely connected together. For instance, if an inverter has a maximum wattage ...



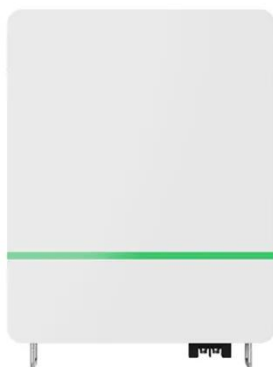


## Solar Inverter String Design Calculations

Oct 12, 2023 · Solar Inverter String Design Calculations The following article will help you calculate the maximum / minimum number of modules per series string when designing your ...

## How many photovoltaic panels are required for an inverter

nverter How many solar panels can I use with an inverter? To determine the minium number of solar panels you can use with an inverter, take the inverter's minimum input voltage (aka start ...



## How many panels can I connect to one inverter?

6 days ago · The maximum number of solar panels you can connect to one inverter depends on: Power of the inverter: The capacity of the inverter (expressed in kW) determines how much ...

## Series, Parallel & Series-Parallel Connection of ...

3 days ago · What is a Solar Photovoltaic Array? A Solar Photovoltaic Module is available in a range of 3 WP to 300 WP. But many times, we need power in a ...



## How Many Solar Panels Can One Inverter Handle?

Jun 20, 2025 · To manually calculate the string size, divide the inverter's voltage input range by the voltage output of an individual solar panel, considering any ...

## How Many Solar Panels Can I Connect to My Inverter?

Sep 20, 2024 · Inverter Capacity: The number of solar panels an inverter can handle is primarily determined by its power rating, usually measured in watts ...



## How many photovoltaic panels are connected in a string





Apr 23, 2022 · The minimum string size, then, is 15 modules. The maximum string size is the maximum number of PV modules that can be connected in series and maintain a voltage ...

---

## Difference between String and Array in Solar Panels

String sizing refers to how many solar panels can and should be wired to an inverter for best results. This will depend on several factors including the inverter voltage capacity. What is the ...



---

## The PV panel configuration way of the string ...

Feb 26, 2024 · The string inverter is a key device used in solar power generation systems. It is responsible for converting the DC power generated by the solar ...

---

## How Many Inverters Per Solar Panel? Don't Miss ...

Apr 28, 2025 · Solar inverters convert



the DC electricity from your panels into AC electricity for use in your home or business. But how many inverters do you

...



---

## Contact Us

For catalog requests, pricing, or partnerships, please visit:  
<https://www.posecard.eu>