

SolarTech Power Solutions

How many mAh does a lithium battery pack usually use



Overview

What is lithium ion battery capacity?

The lithium ion battery capacity is usually expressed or measured in ampere-hours (Ah) or milliampere-hours (mAh). The manufacturing technique and chemistry are the most significant factors influencing lithium-ion battery capacity.

How do I calculate the capacity of a lithium-ion battery pack?

To calculate the capacity of a lithium-ion battery pack, follow these steps:
Determine the Capacity of Individual Cells: Each 18650 cell has a specific capacity, usually between 2,500mAh (2.5Ah) and 3,500mAh (3.5Ah). Identify the Parallel Configuration: Count the number of cells connected in parallel.

Do you know lithium-ion battery capacity?

More and more electric devices are now powered by lithium-ion batteries. Knowing these batteries' capacity may greatly affect their performance, longevity, and relevance. You need to understand the ampere-hour (Ah) and watt-hour (Wh) scales in detail as they are used to quantify lithium-ion battery capacity.

How much can a lithium ion battery reduce its capacity?

The capacity of lithium-ion batteries can be reduced by as much as 25% at high current (C rating) and operating temperature as compared to their published capacity. Manufacturers typically publish the the capacity when the load is C/5 or one fifth of the rated capacity.

How many cells are needed for a lithium battery?

To find the number of cells needed, divide the desired voltage by the voltage of a single cell. If a typical lithium cell operates at 3.7 volts, then for 48 volts, you would need $48V / 3.7V =$ approximately 13 cells in series. Assess capacity requirements: The capacity of cells is measured in ampere-hours (Ah).

What is a lithium-ion battery pack?

Lithium-ion batteries, particularly the 18650 battery pack design, have become the industry standard for many applications due to their high energy density and long lifespan. Understanding how to calculate a lithium-ion battery pack's capacity and runtime is essential for ensuring optimal performance and efficiency in devices and systems.

How many mAh does a lithium battery pack usually use



How to Measure and Calculate Lithium ion ...

Mar 13, 2025 · What is Lithium ion Battery Capacity? Lithium ion battery capacity refers to the amount of electricity energy that the battery can store, usually in ...

How to choose a lithium battery for LED lights?

Feb 27, 2024 · Different kinds of lithium batteries for LED lights Before choosing the best lithium battery for LED lights, you should get to know about three ...



What Batteries Do Flashlights Use? (The Ultimate ...

6 days ago · What Batteries Do Flashlights Use? Flashlights typically use either alkaline or lithium batteries. Alkaline batteries are the most common type of ...

How to calculate the Watt Hours (Wh) of a lithium battery

May 3, 2024 · If you intend to ship or you are traveling by air with lithium cells, batteries or battery packs, you will need to know their Watt-hour rating. This applies to lithium metal batteries ...



18650 Lithium Battery Specs-mAh and Important Specs

May 29, 2020 · How many mAh is a 18650 battery? The 18650 battery mAh level is typically between approximately 2,300 mAh and a maximum of 3,600 mAh. As a higher milliamp level ...



Laptop Battery Capacity: How Much MAh Does It Have And ...

Mar 17, 2025 · A laptop battery usually has a capacity between 2,500 and 4,000 milliamp hours (mAh). The actual battery life varies based on how you use your laptop. For optimal ...



Understanding 5000mAh

Battery: What It Means ...

Aug 11, 2025 · This rating reflects the battery's charge storage capability, not the voltage or overall energy, which affects actual performance. Understanding ...



Lithium-Ion Battery Capacity Explained: mAh, Voltage, and

Apr 21, 2025 · mAh (Milliampere-Hours): Commonly used for smaller batteries (like those in phones and laptops). Ah (Ampere-Hours): Used for larger batteries (like 12V lithium-ion ...



How Many mAh Is a Lithium AA Battery?

Apr 15, 2020 · Do You Know How Many mAh a Lithium AA Battery Is? Battery capacity is defined as a measure of the charge a battery stores and is determined by the chemistry used to ...



How Many Cells in a Lithium Battery Pack? A Complete ...

Mar 14, 2025 · Most commonly, a 12V lithium battery pack is made up of four lithium-ion cells, each with a nominal voltage of 3.7V. This configuration allows the pack to reach a total ...



Understanding 18650 Battery Capacity, Draw, Configuration

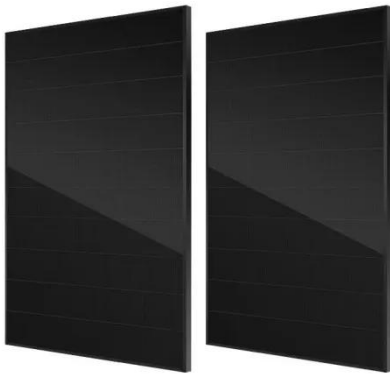
Jun 8, 2024 · Understanding 18650 battery capacity involves knowing its rated mAh and how it performs under load. The draw impacts battery life; higher loads reduce runtime. ...

Battery Pack Calculator , Good Calculators

Here's a useful battery pack calculator for calculating the parameters of battery packs, including lithium-ion batteries. Use it to know the voltage, capacity, energy, and maximum discharge ...



How Load Current Affects a Lithium-Ion Battery's Capacity ...



Jul 3, 2024 · It is usually expressed in ampere-hours (Ah) or milliamperere-hours (mAh). This measurement indicates how much electric charge the battery can ...

Understanding Lithium Ion Battery Capacity: Key Factors and

Feb 20, 2025 · Battery capacity is a measurement of the amount of electrical energy a battery can store and deliver when needed. It is typically expressed in ampere-hours (Ah) or milliamperere ...



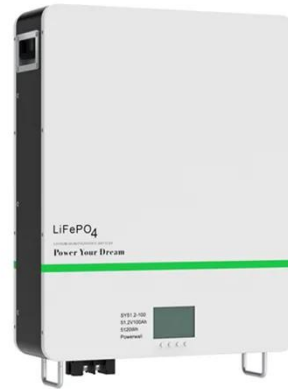
Lithium vs. Alkaline: 9V Battery Capacity Compared

Mar 24, 2025 · How do lithium and alkaline 9V batteries compare regarding capacity and other factors? Before diving into the table, it is essential to clarify ...

18650 Battery Pack Calculator

May 28, 2025 · This 18650 battery pack

calculator is used to determine the optimal configuration of 18650 lithium-ion cells for a specific power requirement. With a 12V battery pack with 10Ah ...



Contact Us

For catalog requests, pricing, or partnerships, please visit:
<https://www.posecard.eu>