

SolarTech Power Solutions

How big is a 300 watt solar panel



Overview

A typical 300-watt solar panel is 65.8 inches long and 36.1 inches wide. It takes up 16.5 sq ft of area. What are the dimensions of a 300 watt solar panel?

The dimensions of a typical 300W solar panel are 1640 mm by 922 mm or 64.57 inches by 39.06 inches. The thickness is between 35 mm and 40 mm.

What is the area of a 300W solar panel?

The area of a 300W solar panel is around 1.6 square metres. It is the smallest size solar panel on the market and is designed for residential and commercial applications where space constraints are an issue. It is an ideal size for those with limited roof space. The area of a 400W solar panel is around 2.2 square metres.

What is the difference between 300W and 400W solar panels?

The 300W panel measures approximately 1.53m long by 1.22m wide. It has an output of 300 watts, which is enough to generate about 1250kWh of electricity per year. The 400W panel is larger, measuring 1.76m long by 1.22m wide.

How many 300 watt solar panels do I Need?

As a general rule of thumb, you need between 8 and 20 300-watt solar panels to power outage a typical home. However, the exact number of panels you need will depend on the specific energy needs of your home and the amount of available space for solar panels. How many batteries can a 300 Watt Solar Panel charge?

.

What is a typical solar panel size?

Rather, we get the typical sizes of solar panels by the number of cells (which is quite useless). There are 3 standardized sizes of solar panels, namely: 60-cell solar panels size. The dimensions of 60-cell solar panels are as follows:

66 inches long, and 39 inches wide. That's basically a 66×39 solar panel.

Are 300 watt solar panels good?

Solar panels of 300 watts or more are an excellent renewable energy source. However, their performance decreases on overcast days. The advantages exceed the disadvantages, and solar power is not equal in the long run. The solar panels used in a solar energy system typically come in 300-watt increments.

How big is a 300 watt solar panel

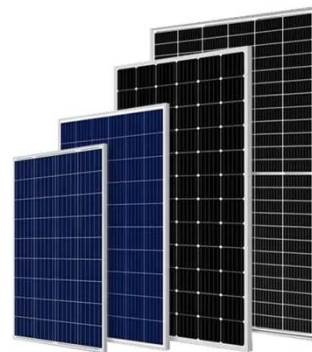


Solar Panel Size: How Big Is a Solar Panel (And ...

Oct 12, 2022 · If you have a 300 watt solar panel you would multiply that 300 watt nameplate DC power rating by those 4 hours to get 1200. This means that the ...

What Size Solar Panel To Charge 100Ah Battery?

3 days ago · A 400-watt solar panel will charge a 100Ah 12V lithium battery in 2.7 peak sun hours (or, realistically, in about half a day, if we presume an average ...



18650 3.7V
Li-ion
RECHARGEABLE BATTERY
2000mAh



300 WATT SOLAR PANELS WHAT TO KNOW

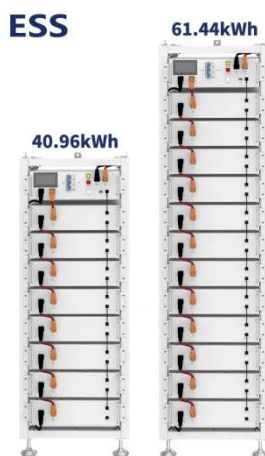
A standard 300 watt solar panel measures about 5 to 5.5 feet long and 3 to 3.5 feet wide.. A common residential solar panel size is approximately 65 inches by 39 inches, and typically has ...

400-Watt Solar Panels: Cost, Size, Power Output ...

Nov 30, 2024 · Explore everything you need to know about 400-watt solar panels in this detailed guide. From their cost, size, and power output to their best ...



- Efficient Higher Revenue**
 - Max. Efficiency 97.5%
 - Max. PV Input Voltage 600V
 - 150% Peak Output Power
 - 2 MPPT Trackers, 150% DC Input Oversizing
 - Max. PV Input Current 15A, Compatible with High Power Modules
- Intelligent Simple O&M**
 - IP66 Protection Degree: support outdoor installation
 - Smart I-V Curve Diagnosis Function: locate PV string faults accurately and automatically detect faults
 - DC & AC Type I SPDs prevent lightning damage
 - Battery Reverse Connection Protection
- Flexible Abundant Configuration**
 - Plug & Play, EPC Switching Under 10ms
 - Compatible with Lead-Acid and Lithium Batteries
 - Max. 6 Units Inverters Parallel
 - AFCD Function (Optional): when an arc fault is detected the inverter immediately stops operation

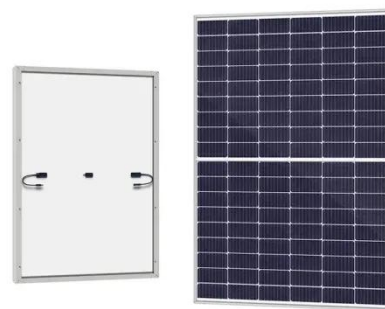


How Big Is A Solar Panel? (Dimensions - Weight + +)

Nov 9, 2024 · A 300w solar panel can generate up to 300 watts of power under ideal conditions. However, the physical size of the panel can vary depending on the manufacturer and the type ...

How Big Is A Solar Panel? (Dimensions - Weight ...)

Jan 10, 2022 · The general size of a 300-watt solar panel gets based on the size and number of solar cells utilized and the efficiency of each cell. The most ...



HOW MUCH POWER DOES A 300 WATT SOLAR PANEL

A standard 300 watt solar panel



measures about 5 to 5.5 feet long and 3 to 3.5 feet wide.. A common residential solar panel size is approximately 65 inches by 39 inches, and typically has ...

ALL YOU NEED TO KNOW ABOUT 300 WATT SOLAR PANELS

How big is a 300 watt photovoltaic panel
A typical 300-watt solar panel is 65.8 inches long and 36.1 inches wide. It takes up 16.5 sq ft of area.. A typical 300-watt solar panel is 65.8 inches ...



Solar Panel Sizes, Dimensions & Weight , Solar ...

Feb 7, 2024 · Solar Panel Sizes - How big are solar panels? This is a question many homeowners ask when they are considering installing a solar system. ...

300 Watt Solar Panel: Everything You Need To ...

Apr 22, 2023 · If a 300 watt solar panel is exposed to sunshine for 8 hours daily, it will produce almost 2.5 kilowatt-hours daily. This equals an annual solar ...

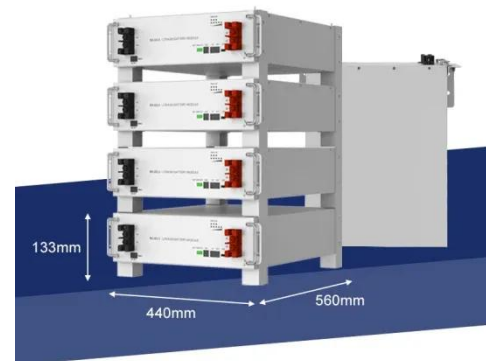


What is the length and width of a 300w solar ...

Oct 12, 2024 · For a 300-watt solar panel, the dimensions typically hover around 66 inches in length and 39 inches in width. Such sizes are not arbitrary; they ...

How Many kWh Does A Solar Panel Produce Per Day?

2 days ago · Quick outtake from the calculator and chart: For 1 kWh per day, you would need about a 300-watt solar panel. For 10kW per day, you would need about a 3kW solar system. If ...



300 WATTS SOLAR PANEL THE COMPLETE BUYING GUIDE



A standard 300 watt solar panel measures about 5 to 5.5 feet long and 3 to 3.5 feet wide.. A common residential solar panel size is approximately 65 inches by 39 inches, and typically has ...

Contact Us

For catalog requests, pricing, or partnerships, please visit:
<https://www.posecard.eu>