

SolarTech Power Solutions

How big a lithium battery can be used with an inverter



Overview

You can run an inverter rated between 1500W and 2400W off a 200Ah lithium battery depending on voltage and usage. Should you use a lithium-ion battery for a home inverter?

A lithium-ion battery for a home inverter can significantly enhance your home's energy storage capabilities. This translates to more reliable power during outages and better management of renewable energy resources like solar panels. Lithium-ion batteries require less maintenance and have a longer lifespan compared to traditional batteries.

How many batteries can a 36V inverter charge?

If there are three 12V 200ah batteries, the battery voltage is 36V ($12V \times 3 = 36$). An inverter with a 36V can recharge these batteries. The maximum capacity is 600ah ($9200 \times 3 = 600$). Battery Parallel Connection. If the battery bank is connected in parallel, the battery bank capacity increases but the battery voltage is the same as each cell.

How many batteries can a solar inverter charge?

This applies to all types of solar inverters regardless of size. The number of batteries you can connect to an inverter cannot be more than 12 times the inverter charging current. A 20A charger can handle 240ah battery maximum. The formula is $A \times 12 = \text{battery capacity (ah)}$. If it is a 40A charger the limit is 480ah.

Can a lithium battery run a 1000W inverter?

Battery Discharge Rate: Lithium batteries can handle high discharge rates, which aligns well with the power demands of a 1000W inverter. However, verify that the battery's maximum discharge rate exceeds the inverter's power draw. **Temperature and Maintenance:** Lithium batteries perform best within specific temperature ranges.

Can a solar inverter be used with a lithium battery?

Integrating a solar inverter with a lithium battery can take your renewable energy setup to the next level. This combination allows for better energy storage, improved efficiency, and greater resilience during power outages. LiFePO4 batteries are particularly well-suited for solar applications because their thermal stability and long cycle life.

How do I choose the right inverter size for my 200Ah lithium battery?

When it comes to choosing the right inverter size for your 200Ah lithium battery, there are a few factors you'll need to consider. The first is the power needs of the devices you plan on running off the inverter. Take into account their wattage requirements and how many devices will be connected at once.

How big a lithium battery can be used with an inverter



How Long Can a Lithium Ion Battery Power an Inverter?

6 days ago · When looking at lithium ion batteries for inverters, there are three main specs to consider: capacity measured in amp hours (Ah), energy stored in watt hours (Wh), and the ...

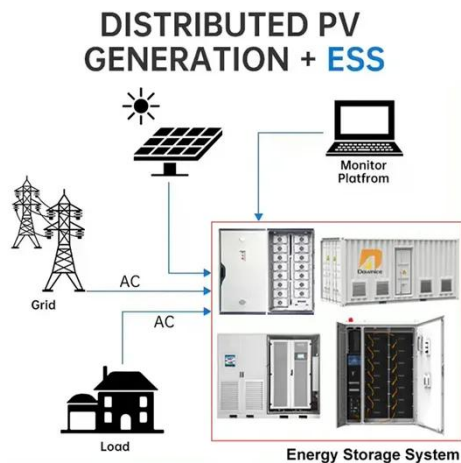
How to Determine What Size Inverter You Can Run Off a 100Ah Battery

Apr 21, 2025 · Determining the appropriate size of an inverter that can be run off a 100Ah battery involves understanding both the power output of the inverter and the energy capacity of the ...



Which Inverter Battery Is Best (Calculated Options)

Oct 6, 2022 · There are two kinds of batteries when it comes to powering inverters: lead-calcium batteries and lithium-ion batteries. Each battery has its ...



What Size Inverter for 100Ah Battery? - MWXNE POWER

May 23, 2025 · ? What Is a 100Ah Battery? A 100Ah (amp-hour) battery delivers 100 amps for one hour, 10 amps for 10 hours, or 1 amp for 100 hours, depending on the load. The actual usable ...



How Big of a Battery Do I Need to Run a 2000W Inverter?

Dec 25, 2023 · To run a 2000W inverter, you typically need a battery with at least 200Ah capacity if you plan to run it for one hour. This calculation assumes a 100% efficiency rate, but in ...

Importance of

Compatibility Between Inverter ...

Oct 13, 2024 · Lithium batteries are known for their longevity, but their lifespan can be significantly shortened if paired with an incompatible inverter. Inverters ...



Understanding Battery Capacity and Inverter Compatibility

Aug 20, 2024 · When pairing a 100 Ah lithium battery with a 1000 watt inverter, it is crucial to ensure compatibility to achieve optimal performance. Lithium batteries typically offer better ...

Why Can an Inverter Be Too Big for a Battery?

When considering whether an inverter can be too big for a battery, it's essential to understand the implications of mismatched capacities. An oversized inverter may lead to inefficiencies, ...



What Size Inverter Can I Run Off a 200Ah Lithium Battery?



6 days ago · You can run an inverter rated between 1500W and 2400W off a 200Ah lithium battery depending on voltage and usage. Typically, a 12V 200Ah battery supports up to about ...

Can a Lithium Battery Be Charged by an Inverter?

Oct 25, 2024 · Yes, a lithium battery can be charged by an inverter, provided the inverter is designed for this purpose. Typically, inverters convert DC power to AC power, but certain ...



18650 3.7V
Li-ion
RECHARGEABLE BATTERY
2000mAh



What size inverter can I run off a 100Ah lithium battery?

May 3, 2025 · A 100Ah lithium battery can safely power an inverter with a continuous wattage rating of 1,000-1,200W in a 12V system, assuming 80% depth of discharge and 90% inverter ...

What Size Battery Do I Need for a 1000W

Inverter?

Dec 13, 2023 · To power a 1000W inverter, you typically need a battery with a minimum capacity of 100Ah if you plan to run it for about one hour. However, the actual size may vary based on ...



Support any customization

Inkjet Color label LOGO

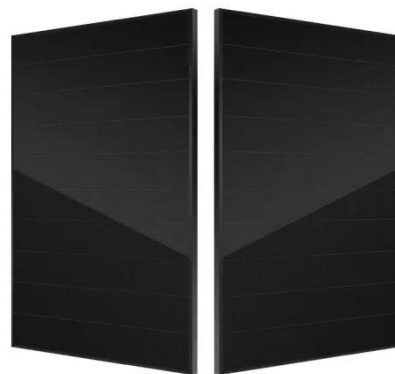


Can all inverters use lithium batteries?

Nov 28, 2023 · Understanding Inverters and Batteries Understanding Inverters and Batteries In order to grasp the compatibility between inverters and lithium batteries, it's important to have a ...

How Many 100Ah Batteries Do I Need with a 2000-Watt Inverter?

Dec 19, 2023 · To power a 2000-watt inverter, you typically need two 100Ah batteries connected in parallel. This configuration allows for sufficient energy storage and ensures that the inverter ...



Can I Connect Inverter to Lithium Battery?



Oct 31, 2024 · Yes, you can connect an inverter to a lithium battery. Lithium batteries, particularly Lithium Iron Phosphate (LiFePO4) batteries, are well-suited for use with inverters due to their ...

What Size Inverter Do I Need?

Oct 25, 2023 · Lead-acid batteries can only use about half of their energy capacity between charges, whereas lithium batteries are closer to 95% usage. What that means is that for the ...



How to Choose the Right Inverter for Lithium Batteries?

Apr 11, 2025 · Answer: To choose the right inverter for lithium batteries, match the inverter's voltage and capacity to your battery's specifications, prioritize pure sine wave inverters for ...

Charging Battery While Connected To Inverter ...

Mar 3, 2023 · Can I charge a battery while it's connected to an inverter? in short, the answer is Yes, you can charge a battery while using an inverter. but make ...



Su-vastika : The future of home energy storage

Aug 26, 2023 · Can we install the lithium-ion battery with the existing inverters on the market? The normal inverters installed in the homes and offices have different chargers for charging Lead ...

Can a Battery Be Too Big for an Inverter?

Dec 12, 2023 · Yes, a battery can be too big for an inverter, leading to inefficiencies and potential safety issues. Oversized batteries may not discharge correctly or could exceed the inverter's ...



What size inverter do you need for a 100ah ...



Oct 17, 2022 · What size inverter for a 100Ah battery? For appliances that use a relatively low amount of power, such as laptops, lights, TVs, and small fridges, ...

How Many Batteries can Be Connected To An Inverter?

The number of batteries you can connect to an inverter cannot be more than 12 times the inverter charging current. A 20A charger can handle 240ah battery maximum. The formula is $A \times 12 = \dots$



Contact Us

For catalog requests, pricing, or partnerships, please visit:
<https://www.posecard.eu>