

SolarTech Power Solutions

Home 360w photovoltaic panel size



Overview

What is Panasonic 360W solar panel 120 cell evervolt evpv360pk?

Panasonic 360W Solar Panel 120 Cell EverVolt EVPV360PK provides a powerful combination of increased module efficiency, energy savings. Look into detailed descriptions, ratings, reviews, pictures at A1 SolarStore.

What is a 360 W Panasonic solar panel?

This 360 W Panasonic solar panel also comes with a generous 25-year product warranty. EVPV360PK design makes it ideal for residential and commercial rooftops. Strong 1.2" frame made from anodized aluminum increases durability and strength. The model can support a heavy snow load up to 7000 Pa.

How big is a 96 cell solar panel?

96-cell solar panel size. The dimensions of 96-cell solar panels are as follows: 41.5 inches long, and 63 inches wide. That's a 63×41.5 solar panel. This form is a bit shorter but wider. This is the typical classification of solar panel sizes (based on the solar cell size). It's a bit theoretical and quite useless for most calculations.

What is a typical solar panel size?

Rather, we get the typical sizes of solar panels by the number of cells (which is quite useless). There are 3 standardized sizes of solar panels, namely:
60-cell solar panels size. The dimensions of 60-cell solar panels are as follows: 66 inches long, and 39 inches wide. That's basically a 66×39 solar panel.

How big is a 300 watt solar panel?

A typical 300-watt solar panel is 65.8 inches long and 36.1 inches wide. It takes up 16.5 sq ft of area. If you have a 1000 sq ft roof, and you can use 75% of that roof area for solar panels, you can theoretically put 45 300-watt solar panels on a 1000 sq ft roof. A typical 400-watt solar panel is 79.1 inches long

and 39.1 inches wide.

Is Panasonic evpv360pk a good solar cell?

Panasonic made solar cells in EVPV360PK two times smaller than the standard size, thus reducing power loss and improving low-light behavior. At 19.7% efficiency, EVPV360PK offers surprising performance for its weight and size. Cell surface, back foil and frame are completely black, giving the model unrivaled aesthetics.

Home 360w photovoltaic panel size



HYUNDAI HIS S360RI 360W SOLAR PANEL

How heavy is a 360w photovoltaic panel
The weight of one solar panel is about 40-50 pounds per panel or 5-6 pounds per square foot. REC 360W 120-cell solar panel is a shining example of a ...

360W Photovoltaic Panel Size Key Considerations for Solar ...

When planning a solar energy system, the 360W photovoltaic panel size has become a goldilocks option - not too big, not too small. But what makes this mid-range power output so popular ...



360W Photovoltaic Panel Size Specifications What You Need

Why 360W Solar Panels Are Gaining Popularity 360W photovoltaic panels strike a balance between power output and space efficiency, making them ideal for rooftops, small-scale solar ...



High Efficiency 360w 370w 380w Mono PV Solar Panels

High quality High Efficiency 360w 370w 380w Mono PV Solar Panels from China, China's leading Mono PV Solar Panels product, with strict quality control 380W PV Solar Panels factories, ...



How heavy is a 360w photovoltaic panel

Sep 12, 2024 · Panasonic 360W EverVolt is a great panel for residential or commercial systems. Panasonic solar panels show low degradation rates, better shading tolerance and backed up ...

360 Watt Solar panels for sale , Prices, dimensions, weight, ...

2 days ago · 360 Watt Solar panels' range of prices, dimensions, sizes, voltage output, specifications datasheets Ranges of information Voltage: 19.8V ~ 147.6V Amp: 2.5A ~ 18A





How heavy is a 360w photovoltaic panel

Panasonic 360W EverVolt is a great panel for residential or commercial systems. Panasonic solar panels show low degradation rates, better shading tolerance and backed up by strong 25-year ...

360W Photovoltaic Panel Size Specifications What You Need

Key Specifications of 360W Solar Panels
Dimensions: Typical size ranges from 1.7m x 1.0m to 1.9m x 1.1m. Weight: 18-22 kg per panel, depending on frame material. Efficiency: 18-20%, ...



Support any customization

Inkjet Color label LOGO



360W Photovoltaic Panel Dimensions Demystified: A

...

When planning solar installations, the physical size of your 360W photovoltaic panel becomes as crucial as its power output. Let's cut through the technical jargon - bigger doesn't always ...

Standard Solar Panel Sizes And Wattages (100W ...

2 days ago · There are 3 standardized sizes of solar panels, namely: 60-cell solar panels size. The dimensions of 60-cell solar panels are as follows: 66 inches ...

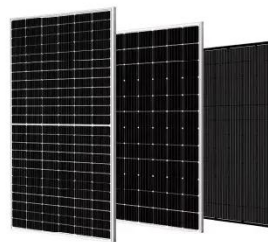


360w Solar Panel , Solar Panels

Jun 25, 2024 · A 360w solar panel is a type of photovoltaic panel that is designed to convert sunlight into electricity. These panels are made up of smaller units called photovoltaic cells, ...

360W MONOCRYSTALLINE SOLAR PANEL WITH 1M CABLE

The average residential solar panel weighs 40-45 pounds, though weight varies by manufacturer and can be as heavy as 60 pounds.. On average, solar panels weigh about 42 pounds, with ...



72-Cells Mono Crystalline Solar Panel 360W for Home



Solar panel refers to a panel designed to absorb the sun's rays as a source of energy for generating electricity or heating. Solar Photovoltaic panels constitute the solar array of a ...

360W monocrystalline solar panel with 1m cable

This high efficiency Photonic Universe 360W monocrystalline solar panel is perfect for permanent outdoor use to provide free electricity in any grid-tie, hybrid or off-grid application (such as ...



Contact Us

For catalog requests, pricing, or partnerships, please visit:
<https://www.posecard.eu>