

SolarTech Power Solutions

Generation power of photovoltaic panels per square meter



Overview

Solar cells can generate 200 watts (watt-peak, Wp) per square meter. This is the status in 2024, the value has grown significantly in the last few years, in the year 2010 it was about 80 Wp/m². How much energy does a solar panel produce per square meter?

Given Egypt's high solar irradiance levels, which can reach up to 2200 kWh/m² annually, the potential power output per square meter of a solar panel can be quite significant. For a solar panel with an efficiency of 18%, this translates to an annual energy production of about 396 kWh/m².

How many watts can a solar panel generate?

This means that for every square meter of this solar panel, you can generate 180 watts of power under optimal conditions. Panel Orientation and Tilt: The angle at which the panel is installed can significantly affect its efficiency. Solar panels should be oriented to face the sun as directly as possible throughout the day.

How do you calculate solar panel output in watts per square meter?

The formula to calculate the solar panel output and how much energy solar panels produce (in watts) using watts per square meter is as follows: Solar Panel Output (W) = Watts per Square Meter (W/m²) × Area of Solar Panel (m²).

What is solar power measurement?

In the context of solar panels, it refers to the amount of electrical power a solar panel can generate per unit of surface area exposed to sunlight. This measurement for solar panels is a crucial factor in determining the solar panel efficiency and performance of solar panels.

What is solar panel efficiency?

Solar panel efficiency is a measure of how much sunlight a solar panel can

convert into usable electricity. It is expressed as a percentage and indicates the proportion of sunlight that hits the panel and is transformed into electrical energy.

Why is solar energy per square meter important?

Measuring solar energy per square meter helps evaluate electricity generation capabilities and is crucial for assessing solar panels' effectiveness and solar farms' ability to harness sunlight and reduce fossil fuel dependence, which contributes to climate change. What is Solar Energy Per Square Meter?

Generation power of photovoltaic panels per square meter



Photovoltaic solar power generation per square meter

What is solar panel efficiency? Solar panel efficiency is crucial for a solar power system's success. High-efficiency panels convert more sunlight into electricity,boosting overall output. To ...

Solar photovoltaic power generation per square meter

However,in real-world conditions,they usually only produce 200 to 300 watts per square meter. Most residential solar panels produce between 1 and 3 kilowatts (kW) of power. That might not

...



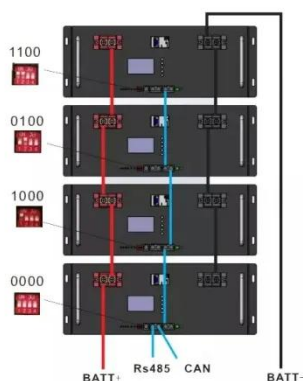
Solar Panel Power Per Square Meter: How to ...

Jul 16, 2025 · Calculating the solar panel power per square meter is an essential step in understanding the efficiency and potential of solar energy systems. By ...



Solar photovoltaic power generation per square meter

Solar photovoltaic power generation per square meter How much power does a solar panel produce per square meter? However, in real-world conditions, they usually only produce 200 to ...



30 square meters of solar panels for power generation

Estimated electricity generation (kWh/square foot/year) = (Solar irradiance per square meter) x (Panel efficiency) x (Conversion factor)
Conversion factor: To convert square meters to square ...

HOW MUCH ENERGY DOES

SOLAR PANELS PRODUCE PER SQUARE METER

How much solar power generation per square meter Wattage is the output of solar panelsthat is calculated by multiplying the volts by amps. Here, the amount of the force of the electricity is

...



Sample Order
UL/KC/CB/UN38.3/UL

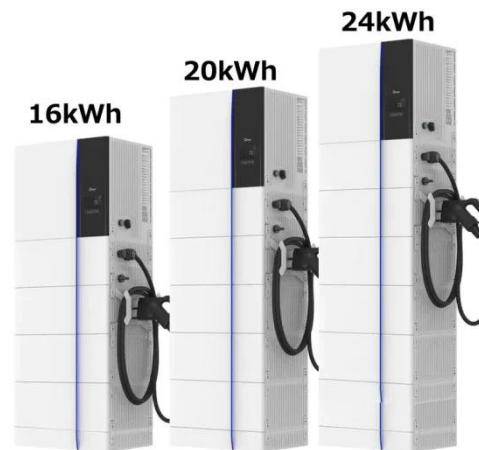


Solar energy generation per square meter

generate approximately 150 watts of power on a clear, sunny day. However, the actual electricity generation will be lower than this figure due to the weather conditions. How much electricity do ...

How much energy does a solar panel produce in a day

Nov 10, 2023 · How Much Difference in Power Generation Between Sunny and Cloudy Days Last month, while helping analyze data for a PV power plant in Qinghai, I discovered that within the ...



Watts Per Square Meter Solar Panel - The Go-to Guide



Aug 29, 2023 · Watts per square meter (W/m^2) is the power density of sunlight falling on a given area of solar panels. In the context of solar panels, it refers to the amount of electrical power a ...

Photovoltaic panel output power per square meter

This is the While they may have a lower power output per square meter than monocrystalline panels, they are often more cost-effective, making them a popular choice for those seeking ...

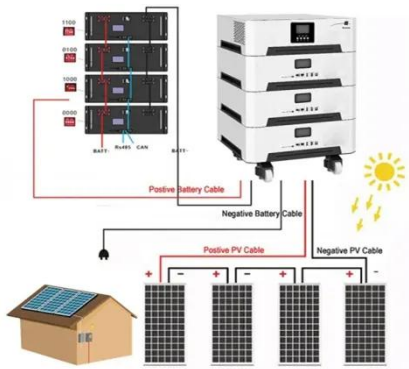


How Much Electricity Can 1 Square Meter of Solar Panels ...

For 1m^2 of modern photovoltaic panels, you're looking at a daily output ranging from 0.3 kWh to 1.5 kWh. But why such a wide range? Stick with me - this solar story has more twists than a ...

Photovoltaic solar power generation per square meter

Solar panel watts per square meter (W/m) measures the power output of a solar panel based on its size. Compare solar panels to see which generates most electricity per square meter. A ...



How many watts of photovoltaic solar energy per square meter

May 21, 2024 · Photovoltaic solar energy can generate between 150 to 200 watts per square meter under optimal conditions. To elaborate, various factors influence this output, including ...

Solar photovoltaic power generation per square meter ...

The average solar panel produces 2 kWh of energy per day, but the actual amount depends on where you live and the size of the solar panel. Updated 1 week ago
The physical size of the ...



Solar Panel Power Generation Calculation

Analysis

Nov 22, 2023 · The power generation of a solar panel can be calculated using the following basic formula: $P=A \times G \times ?$ where: P is the power output in watts (W). ...



Photovoltaic panel power generation per square meter

How to Calculate Solar Panel kWh: To find the power in kWh, consider panel size, efficiency, and the output per square meter of panels. tt power drain or source over the square meter area. ...



How much electricity can a photovoltaic panel generate ...

Apr 2, 2023 · What is solar panel watts per square meter (W/M)? ter (W/m) measures the power output of a solar panel based on its size. Compar solar panels to see which generates most ...



SOLAR POWER PER SQUARE METER

CALCULATOR

The solar panels are usually rated by the amount of power they can generate per square meter, this value is called the "nameplate rating" and can go from 150 to 300 W/m² depending on the ...



100 square meters of solar photovoltaic power generation

100 square meters of solar photovoltaic power generation What is solar panel watts per square meter (W/M)? Solar panel watts per square meter (W/m) measures the power output of a solar ...

A new hourly dataset for photovoltaic energy production for ...

Feb 1, 2022 · These new data provide an ensemble of power production simulations with high spatial and temporal resolutions. They can be used for a multitude of studies, from assessing ...



Actual power generation of

photovoltaic panels per ...



Actual power generation of photovoltaic panels per square meter How much power does a solar panel produce? Standardized residential solar panels on the market are quoted to generate ...

100 square meters of photovoltaic panels power ...

Below is a chart comparing solar generation potential based on roof size, assuming all of the same metrics as before: 400-watt solar panels, 20-square-foot panels, and using every inch of ...



Contact Us

For catalog requests, pricing, or partnerships, please visit:
<https://www.posecard.eu>