

## SolarTech Power Solutions

# Finland forest fire prevention communication base station wind and solar complementarity



## Overview

---

What is a wireless sensor network for forest fire detection?

Hefeeda and Bagheri (2009) developed a wireless sensor network for forest fire detection based on Fire Weather Index (FWI) system which is one of the most comprehensive forest fire danger rating systems in USA. The system determines the spread risk of a fire according to several index parameters.

Can a wireless surveillance system monitor forest fires?

Hartung and Han (2006) developed a multi-tiered portable wireless system for monitoring environmental conditions, especially for forest fires. Integrating web-enabled surveillance cameras with wireless sensor nodes, the system can provide real-time weather data from a forest.

Does a clustered logical topology improve fire detection application of sensor networks?

We performed several tests (described later in Section 4.2.2) and observed that use of a clustered topology provides important advantages for fire detection application of sensor networks. Hence, we propose a clustered logical topology for the network to properly and adaptively control the sensor nodes under various conditions.

What is the unit of  $\alpha$  in a fire detection WSN system?

The unit of  $\alpha$  is meter/Joule. Note that, the value of  $\alpha$  is to be found experimentally, which is not focused in this paper. As mentioned earlier, another important factor that affects the performance of a fire detection WSN system is the deployment pattern of sensor nodes.

What factors affect the performance of a fire detection WSN system?

As mentioned earlier, another important factor that affects the performance of a fire detection WSN system is the deployment pattern of sensor nodes. Two general approaches can be considered to define the deployment pattern: (1)

regular deployment, or (2) random deployment.

How is bioenergy used in Finland?

Bioenergy is widely used in Finland's heating sector and provides a reliable alternative to fossil fuels. Forest Biomass: Finland's forests are a valuable resource for bioenergy production. Forest residues, such as branches, tree tops, and wood chips, are collected and processed into biofuels for heating and electricity generation.

## Finland forest fire prevention communication base station wind and

---



### Forest fire prevention- solar wireless surveillance

...

Nov 19, 2021 · The solar cctv camera system is widely used in the field of forest fire monitoring due to its fast construction, stable performance, low cost, low ...

### Review of mapping analysis and complementarity between solar and wind

Nov 15, 2023 · The paper framework is divided as: 1) an introduction with gaps and highlight; 2) mapping wind and solar potential techniques and available data to perform it; 3) a review of ...



### Real-time Forest Fire Detection and Alert System Using ...

Dec 16, 2023 · This work proposes the design and implementation of a real-time forest fire detection and alert

system utilizing wireless sensor networks (WSN) and solar energy



## Severe forest fire risk prompts countrywide ban

...

May 26, 2018 · The index is a tool that FMI has developed to assess forest fire risk in Finland with indicators like humidity, temperature, wind velocity, solar ...



## Finnish Wind Power Association is now Renewables Finland

Jul 30, 2024 · Finnish Wind Power Association expands its activities to include not only wind power but also industrial-scale solar power and will operate under the name Renewables ...

## A copula-based wind-solar complementarity

## coefficient: ...

Mar 1, 2025 · A measure of wind-solar complementarity coefficient  $R$  is proposed in this paper. Utilizes the copula function to settle the Spearman and Kendall correlation coefficients ...

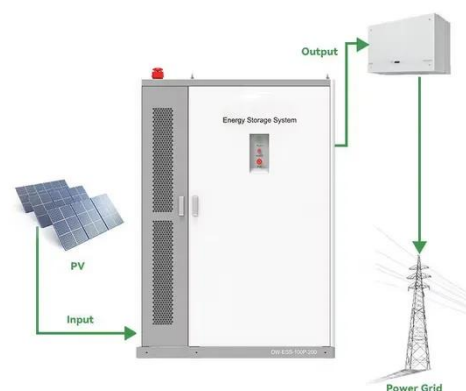


## Designing a Sustainable Zigbee-Enabled Forest Fire ...

Nov 12, 2024 · Real-time forest temperature and humidity monitoring is possible. This system has three fire sensors that automatically turn on water pump and communicate data to base station ...

## On the spatiotemporal variability and potential of complementarity ...

Aug 15, 2020 · The anticipated greater penetration of the variable renewable energies wind and solar in the future energy mix could be facilitated by exploiting their complementarity, thereby ...



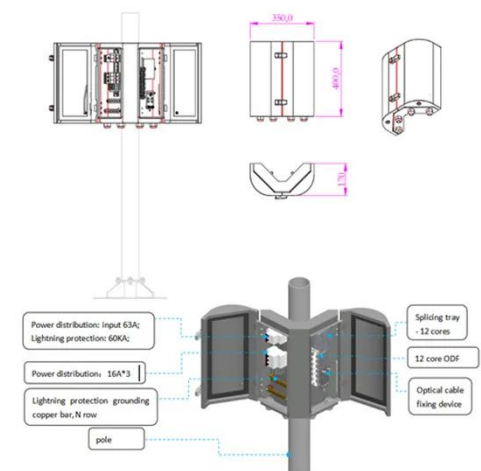


## Joint Probabilistic Forecasting of Wind and Solar ...

Apr 16, 2025 · Reliable and precise joint probabilistic forecasting of wind and solar power is crucial for optimizing renewable energy utilization and maintaining ...

## Finland has a problem with too few forest fires - ...

Aug 10, 2018 · While other countries grapple with destructive and deadly forest fires, the problem in Finland is the opposite. From nature's point of view, the ...



## Real-time Forest Fire Detection and Alert System Using ...

Dec 16, 2023 · This work proposes the design and implementation of a real-time forest fire detection and alert system utilizing wireless sensor networks (WSN) and solar energy. The ...

## Global atlas of solar and wind resources temporal

## complementarity

Oct 15, 2021 · The research employs Kendall's Tau correlation as the complementarity metric between global solar and wind resources and a pair of indicators such as the solar share and ...



## Optimizing wind-solar hybrid power plant configurations by ...

Jan 3, 2025 · The intermittent nature of wind and solar sources poses a complex challenge to grid operators in forecasting electrical energy production. Numerous studies have shown that the ...

## Monitoring of Forest Fire Detection System using ZigBee

Jun 24, 2019 · The system proposed solution presents the prototype for early forest fire detection in which an alert is send to base station via SMS (Short Message Service) and call using GSM ...



## EFFSIP: Efficient forest fire system using IoT and





## parallel ...

Mar 1, 2025 · The escalating issue of forest fires poses severe risks to ecosystems and human habitats, primarily due to the greenhouse effect and sudden climate changes. These fires, ...

## Renewable Energy in Finland: Wind, Solar, and ...

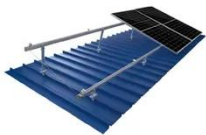
Dec 29, 2024 · Finland is committed to sustainable energy solutions and has set ambitious goals to increase its use of renewable energy sources. Wind, solar, ...



TILE ROOF SOLAR MOUNTING SYATEM



STANDING SEAM ROOF SYATEM



ADJUSTABLE TILT FLAT ROOF SYATEM



TRIANGLE FLAT ROOF SYATEM

## Towards early forest fire detection and prevention using AI ...

Oct 1, 2024 · We geolocate forest trees in a terrain-mapping exercise for precise fire localization. We then deploy an autonomous drone with a visual camera that utilizes our novel ...

## SOLAR POWERED WIRELESS FOREST FIRE

## DETECTION

Dec 6, 2021 · Using this GSM based forest fire detection and prevention system, temperature and smoke concentration of the forest area can be easily obtained. The system is low cost, simple ...



## The wind-solar hybrid energy could serve as a stable power ...

Oct 1, 2024 · The instability of wind and solar power hinders their penetration into electrical transmission networks. Hybrid wind-solar power generation can mitiga...

## Forest Fire Using Optimized Solar Powered Wireless ...

Jan 29, 2022 · Forest Fire prevention methods largely consist of Patrols, Observation from watch towers, satellite monitoring and lately Wireless Sensor Networks. For example, observation ...



## A framework for use of wireless sensor networks

## in forest fire

Nov 1, 2012 · In this paper, we propose a comprehensive framework for the use of wireless sensor networks for forest fire detection and monitoring. Our framework includes proposals for ...



## A review on the complementarity between grid-connected solar and wind

Jun 1, 2020 · The spread use of both solar and wind energy could engender a complementarity behavior reducing their inherent and variable characteristics what would improve predictability ...



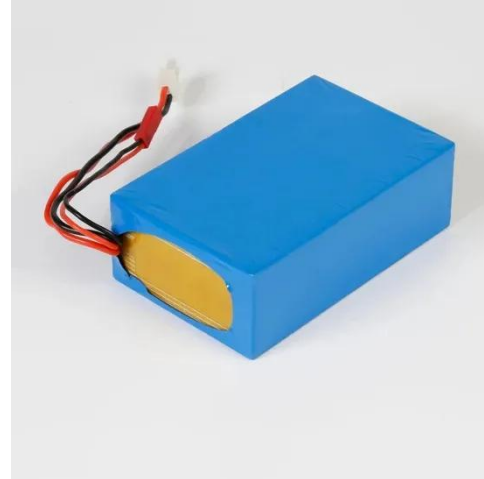
## Optimization of wind-solar hybrid system based on energy ...

Dec 30, 2024 · Finally, several policy recommendations for the design of wind-solar hybrid power systems were offered, emphasizing the importance of wind-solar complementarity, the ...

## A novel metric for

## assessing wind and solar power complementarity ...

Feb 15, 2023 · Additionally, the proposed complementarity index can be used to optimize the installed capacity ratio of wind and solar power in a hybrid system. The proposed ...



## Complementary potential of wind-solar-hydro power in ...

Sep 1, 2023 · Since wind power and solar PV are specifically intermittent and space-heterogeneity, an assessment of renewable energy potential considering the variability of wind ...

## Autonomous drones may join Finland's forest fire fight

Sep 20, 2024 · The idea of a pair of drones communicating with each other, independently searching for a forest fire and circling a blaze may sound like a scene from a science fiction ...



## SOLAR POWERED WIRELESS FOREST FIRE

## DETECTION



Dec 6, 2021 · The prevention and monitoring of Forest Fires has become a global concern in Forest Fire prevention organizations. In order to simplify and reduce the costs of fire ...

---

## Contact Us

For catalog requests, pricing, or partnerships, please visit:  
<https://www.posecard.eu>