

SolarTech Power Solutions

Does the inverter have low voltage protection



Overview

Does a hybrid inverter/charger have low voltage protection?

Both our standard inverter and hybrid inverter/chargers have low voltage protections. In a hybrid inverter, you may get warning about "battery low voltage" or "battery over-discharge", and in a standard system your charge controller and inverter may show a fault or shut off due to low battery voltage.

Do inverters need protection?

Without proper protection, an inverter can be damaged by power surges, voltage spikes, and other electrical disturbances. There are several types of protection that can be used to protect inverters: Surge protection: This type of protection is designed to protect the inverter from power surges and voltage spikes.

What are the different types of inverter protection?

Surge protection: This type of protection is designed to protect the inverter from power surges and voltage spikes. Overload protection: This type of protection is designed to protect the inverter from being overloaded. Under-voltage protection: This type of protection is designed to protect the inverter from low voltage.

What is inverter low voltage?

Now that we know what inverter low voltage is, let's explore some common causes behind it. One prevalent cause could be a faulty battery. An old or damaged battery may not be able to provide sufficient power, leading to low voltage from the inverter. Another possible cause could be an inadequate power source or improper electrical connections.

Why is my inverter low voltage?

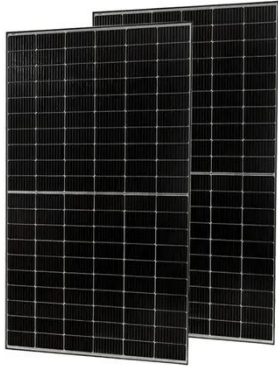
Another possible cause could be an inadequate power source or improper

electrical connections. Faulty wiring can also result in voltage fluctuations. If you are experiencing inverter low voltage problems, it's essential to diagnose the issue accurately. Start by checking the battery health.

Why is my inverter NOT working?

By understanding the causes behind such issues and following the appropriate diagnostics, you can get your inverter back to working optimally. Remember to check the battery health, power source, and electrical connections regularly to avoid potential voltage troubles in the future. Are you experiencing voltage troubles with your inverter?

Does the inverter have low voltage protection



Does the Inverter 24v 220v 6200w have under

Jun 23, 2025 · In simple terms, under - voltage protection is a safety feature in an inverter. When the input voltage drops below a certain level, the inverter will automatically shut down or take ...

Why is my inverter shutting off due to "battery low voltage"?

Jun 24, 2021 · Both our standard inverter and hybrid inverter/chargers have low voltage protections. In a hybrid inverter, you may get warning about "battery low voltage" or "battery ...

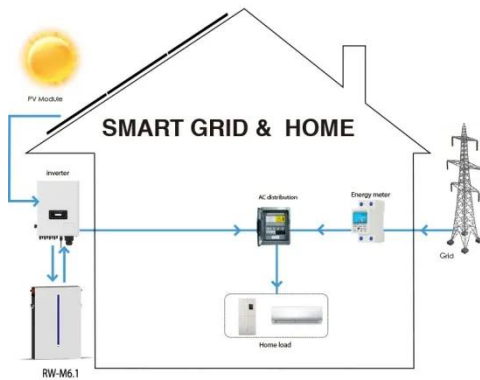


Low Battery and Overload Protection Circuit for ...

Dec 18, 2024 · A very simple low battery cut-off and overload protection circuit has been explained here. The figure shows a very simple circuit set up which ...

List of Victron inverters with programmable low battery cutoff voltage

Aug 20, 2022 · Here is the datasheet for the Phoenix Inverter 12V / 1200VA for example: You're 100% certain and are confirming that with this inverter, using a VE direct cable and a laptop, I ...



Three Common Misconceptions About Grid-tied Inverters

Aug 27, 2024 · Discover common misconceptions about grid-tied inverters in solar PV systems, including voltage output, anti-islanding protection, and DC string voltage effects.

Do Lento Inverters Have Protection Against Power Surges and Voltage

Your air conditioner will not work normally until the voltage returns to normal. So, can low voltage damage air conditioners if the situation persists for long periods? Unfortunately, low voltage ...



114KWh ESS



ISO 9001 ISO 14001 PICC RoHS CE MSDS UN38.3 UK CA IEC

External low voltage relay to shut down mobile inverter.

Jul 15, 2022 · What I am attempting to do is to shut off a mobile inverter at my adjustable battery low voltage point rather than the inverters factory set limit. I see that I can buy a DC Digital ...

How to choose the right low voltage inverter

Jul 23, 2023 · Consider the long-term savings and benefits that a high-quality inverter can provide, even if it requires a slightly higher investment initially. In conclusion, choosing the right low ...



Inverter Low Voltage Cutoff--Why SO low?

Aug 23, 2022 · Why do these inverters allow the battery to discharge to 10V (or lower)? Is it due to some difference between "resting" voltage and in-use voltages? Is there a general consensus ...

Inverter Protection: Why It's Important and How ...

Jan 26, 2023 · Without proper protection, an inverter can be damaged by power surges, voltage spikes, and other electrical disturbances. There are several ...



Inverter Protection and Ride-Through: Today's

Jun 4, 2021 · Inverter grid supporting functions, along with voltage and frequency ride-through, provide key behaviors that both support and enhance grid reliability. Today's PV and energy ...

Solar grid tie inverter protection function introduction

May 20, 2022 · At this time, the solar PV inverter is required to support for a period of time (within 1s) until the grid voltage recovers. The zero (low) voltage transverse function is suitable for ...



What Does The Fault Light Mean On A Power ...



Oct 26, 2022 · The input voltage from the battery bank or the solar array is either too low or too high, and thus the Red light indicates that the low current and ...

Why is my inverter shutting off due to "battery ...

Jun 24, 2021 · Both our standard inverter and hybrid inverter/chargers have low voltage protections. In a hybrid inverter, you may get warning about "battery ...

114KWh ESS



ISO 9001 ISO 14001 PICC RoHS CE MSDS UN38.3 UK CA IEC



WZRELB Reliable Inverters Low Voltage Cutoff Mod How To

Apr 28, 2020 · If you have one of these off grid inverters and the low voltage cutoff activates out of spec or you just want to adjust the low voltage cutoff lower or higher you can do this mod. You ...

Three Common Misconceptions About Grid-

Grid-Tied Inverters

Aug 27, 2024 · If the string voltage is too low, the inverter may struggle to reach its rated AC output voltage, reducing efficiency. Conversely, if the string voltage is too high, it may exceed ...



Do Inverters Turn Off When Voltage is too low?

Oct 26, 2021 · Group, If my batteries drop too low and the grid is off will an inverter turn off (stop outputting AC current)? I want to verify it will shut off and not provide dangerously low voltage ...

Inverter low voltage protection shutdown

Jun 1, 2014 · After the batteries have discharged below 12 volts (in the 11.5 to 11.7 range, the inverter low voltage protection kicks in when trying to pull power to start the refrigerator.



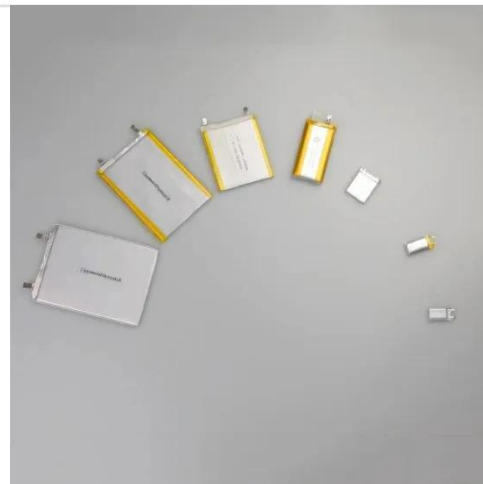
Solar Grid Tie Inverter Protection Function ...



Sep 29, 2019 · At this time, the PV solar inverter is required to support for a period of time (within 1s) until the grid voltage recovers. The zero (low) voltage ...

Low Voltage Inverter: Definition, Function, And Applications ...

3 days ago · A low voltage inverter is an electronic device that converts direct current (DC) into alternating current (AC) with a relatively low input voltage, usually below 1000 volts. This is in ...



Contact Us

For catalog requests, pricing, or partnerships, please visit:
<https://www.posecard.eu>