

SolarTech Power Solutions

800W inverter input voltage



Overview

The 800W inverter has an input range of 665V – 920V DC, and delivers a stabilized 230V AC. The inverter/inverter is protected against overload, overvoltage and undervoltage.

800W inverter input voltage

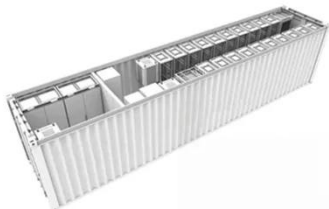


Industrial 110V inverter, 800W o DWE

Jul 28, 2025 · The 800W inverter has a wide input range of 90V - 135V DC. The inverter has a continuous power of 800W but it can supply a peak power of 1200W for up to 10 seconds. So ...

Industrial 96V inverter, 800W o DWE

Jun 23, 2025 · The DY800-DA100 is an industrial DC/DC inverter that converts a DC voltage from 96V to 230V AC voltage and can deliver a power of 800W. The inverter comes standard with a ...



Industrial 36V inverter, 800W o DWE

Jun 23, 2025 · The DY800-DA38 is an industrial DC/DC inverter that converts a DC voltage from 36V to 230V AC voltage and can deliver a power of 800W. The inverter comes standard with a ...

SOLKSW1000VA800W Solarix KingStar 1000VA 12VDC Pure Sine Wave Inverter

Jun 30, 2025 · SOLKSW1000VA800W
Solarix KingStar 1000VA 12VDC Pure
Sine Wave Inverter - 800w Rated Power,
DC Input Voltage 12VDC, AC Input
Voltage 230VAC, AC Output Voltage ...



230v 800W hybrid solar energy storage micro inverter

The 230v 800W hybrid micro inverter is designed to handle a voltage of 230 volts and a power output of 800 watts. This makes it suitable for a wide range of applications, from small ...

800 Watt Solar System (Full Guide, Sizing, ...

Aug 2, 2022 · Mainly you should focus on the inverter's maximum DC input power (W) and the MPPT voltage range (V). It is usually thought that the inverter size ...



Industrial 48V inverter, 800W o DWE



Jul 28, 2025 · The 800W inverter has a wide input range of 40V - 60V DC. The inverter has a continuous power of 800W but it can supply a peak power of 1200W for up to 10 seconds. So ...

Industrial 500V inverter, 800W o DWE

Jun 23, 2025 · The DY800-DA500 is an industrial DC/DC inverter that converts a DC voltage from 500V to 230V AC voltage and can deliver a power of 800W. The inverter comes standard with ...



Power Inverters 800W 1000W 1600W 2000W Input Voltage 12V Output Voltage

Oct 1, 2024 · Power Inverters 800W 1000W 1600W 2000W Input Voltage 12V Output Voltage 220V Pure Sine Wave DC Inverter, Find Details and Price about Inverter Inverter 12V 220V ...



Industrial 80V inverter,

800W o DWE

Jun 23, 2025 · The DY800-DA83 is an industrial DC/DC inverter that converts a DC voltage from 80V to 230V AC voltage and can deliver a power of 800W. The inverter comes standard with a ...



Industrial 350V inverter, 800W o DWE

Jul 28, 2025 · The DY800-DA350 is an industrial DC/DC inverter that converts a DC voltage from 350V to 230V AC voltage and can deliver a power of 800W. The inverter comes standard with ...

WZRELB 800w Power Inverter Pure Sine Wave Inverter DC to ...

WZRELB Pure Sine Wave Inverter is a reliable inverter which converts 12V DC power from battery to 120V AC. It produces power for indoor or outdoor use. It has rated power: 8000W; ...



Industrial 24V inverter, 800W o DWE



Jul 28, 2025 · The DY800-DA26 is an industrial DC/DC inverter that converts a DC voltage from 24V to 230V AC voltage and can deliver a power of 800W. The inverter comes standard with a ...

Industrial 400V inverter, 800W o DWE

Jul 28, 2025 · The DY800-DA400 is an industrial DC/DC inverter that converts a DC voltage from 400V to 230V AC voltage and can deliver a power of 800W. The inverter comes standard with ...



Industrial 200V inverter, 800W o DWE

Jun 23, 2025 · The DY800-DA200 is an industrial DC/DC inverter that converts a DC voltage from 200V to 230V AC voltage and can deliver a power of 800W. The inverter comes standard with ...

Industrial 800V inverter, 800W o DWE

Jul 28, 2025 · The 800W inverter has an input range of 665V - 920V DC, and delivers a stabilized 230V AC. The inverter/inverter is protected against overload, overvoltage and undervoltage.

...

APPLICATION SCENARIOS



Power Inverters 800W 1000W 1600W 2000W Input Voltage 12V Output Voltage

Sep 5, 2024 · Power Inverters 800W 1000W 1600W 2000W Input Voltage 12V Output Voltage 220V Pure Sine Wave Inverter, Find Details and Price about Inverter Inverter 12V 220V from ...

Can a 800W Inverter Run a Battery Charger?

Jul 20, 2025 · Yes, an 800W inverter can run a battery charger--but only if the charger's power demands stay within the inverter's limits. Many assume any inverter can handle a charger, but ...



Contact Us

For catalog requests, pricing, or partnerships, please visit:
<https://www.posecard.eu>