

## SolarTech Power Solutions

# 8 4v lithium battery pack in series



## Overview

---

What are the different types of lithium battery packs?

Lithium battery series and parallel: There are both parallel and series combinations in the middle of the battery pack, which increases the voltage and increases the capacity. Such as 4000mAh, 6000mAh, 8000mAh, 5Ah, 10Ah, 20Ah, 30Ah, 50Ah, 100Ah and so on. Take 48V 20Ah lithium battery pack as an example Lithium Battery PACK.

What batteries are included in the battery library?

The library includes information on a number of batteries, including Samsung (ICR18650-30B, INR18650-25R), Sony (US18650GR, US18650VTC6), LG (LGABHG21865, LGDBMJ11865), Panasonic (UR18650NSX, NCR18650B), and many more. Max. Cell Voltage (V): Pack Max. Voltage: 0 Max.

What does 3.8v/cell mean on a lithium ion cell?

On a lithium-ion cell, 3.8V/cell indicates a state-of-charge of about 50%. It must be noted that utilizing voltage as a fuel gauge function is inaccurate because cells made by different manufacturers produce a slightly different voltage profile. This is due to the electrochemistry of the electrodes and electrolyte.

Why are lithium batteries connected in series?

Lithium batteries are connected in series when the goal is to increase the nominal voltage rating of one individual lithium battery - by connecting it in series strings with at least one more of the same type and specification - to meet the nominal operating voltage of the system the batteries are being installed to support.

How many volts does a battery pack produce?

Figure 2 shows a battery pack with four 3.6V Li-ion cells in series, also known as 4S, to produce 14.4V nominal. In comparison, a six-cell lead acid string with

2V/cell will generate 12V, and four alkaline with 1.5V/cell will give 6V. Adding cells in a string increases the voltage; the capacity remains the same.

What is the cell voltage of a lithium ion battery?

The nominal cell voltage for a nickel-based battery is 1.2V, alkaline is 1.5V; silver-oxide is 1.6V and lead acid is 2.0V. Primary lithium batteries range between 3.0V and 3.9V. Li-ion is 3.6V; Li-phosphate is 3.2V and Li-titanate is 2.4V. Li-manganese and other lithium-based systems often use cell voltages of 3.7V and higher.

## 8 4v lithium battery pack in series

---



### In Stock 2 cell pack 8.4V Lithium Ion Battery ...

Mar 5, 2025 · 7.2V 7.4V li ion battery charger, 8.4V Universal AC input OEM and consumer lithium-ion battery charger for 2 cell packs, 8.4V charging voltage, ...

## How to Connect Lithium Batteries in Series and ...

Jun 7, 2024 · In this article, we'll explore the basics and provide detailed, step-by-step instructions on how to connect lithium batteries in series, parallel, and ...



### Battery pack calculator : Capacity, C-rating, ampere, charge ...

Battery calculator : calculation of battery pack capacity, c-rate, run-time, charge and discharge current Onlin free battery calculator for any kind of battery : lithium, Alkaline, LiPo, Li-ION, ...

## Introduction: What Is a Lithium-Ion Battery Pack?

Jul 4, 2025 · Lithium-ion battery packs are essential power sources used in medical equipment, drones, robots, and countless other devices. These packs are made of multiple Li-ion cells ...




**TAX FREE**





### ENERGY STORAGE SYSTEM

**Product Model**  
HJ-ESS-215A(100KW/215KWh)  
HJ-ESS-115A(50KW 115KWh)

**Dimensions**  
1600\*1280\*2200mm  
1600\*1200\*2000mm

**Rated Battery Capacity**  
215KWH/115KWH

**Battery Cooling Method**  
Air Cooled/Liquid Cooled



## Buy Best Quality 2s lithium-ion battery with ...

5 days ago · Discover our range of 2 Cell (7.4V~8.4V) lithium-ion battery packs, designed to provide reliable and consistent power for your electronic devices ...

## How to Correctly Connect Batteries in Series and ...

Apr 10, 2025 · Understanding how to properly connect batteries in series and parallel formula might seem straightforward, but by adhering to a few simple ...



## Lithium Rechargeable Batteries - IBEX Resources

Take an example of a 7.4V 24.8Ah



lithium battery pack (16 cells connected in 2 series, 8 parallel): To fully recharge the pack you need to put in up to 24.8Ah. Say you have a max charge time ...

## Charging Circuit for 2S (8.4V) Battery Pack (2 x 18650 in series)

Oct 9, 2024 · Can't go into much detail, but basically it's a battery powered circuit that draws between 15mA in idle state, up to 2.5 A peak, at 5V DC. I have the choice of: - powering this ...



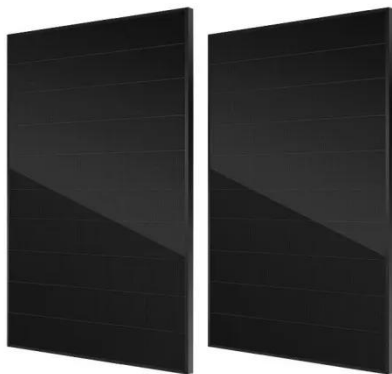
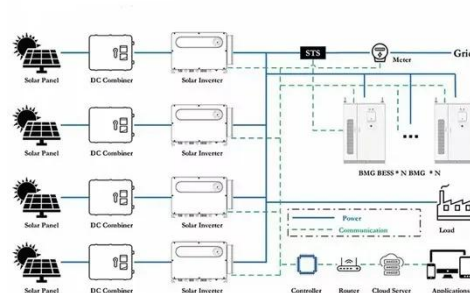
## Ultimate Power: Lithium-Ion Batteries In Series

Apr 4, 2024 · At some point, the 3.6 V of a single lithium ion battery just won't do, and you'll absolutely want to stack Lilon cells in series. When you need high ...

## Help in making an 8.4v, 4x18650 cell

Feb 19, 2013 · The standard battery

pack is some sort of 4 x 18650 cell configuration but I can't workout the set up to get the 8.4v it's stated to be. Some sort of circuitry within the battery pack?



## Battery Pack Calculator , Good Calculators

Here's a useful battery pack calculator for calculating the parameters of battery packs, including lithium-ion batteries. Use it to know the voltage, capacity, energy, and maximum discharge ...

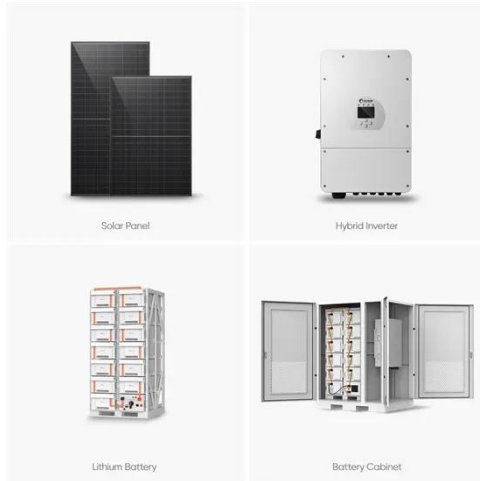
## How to Correctly Connect Batteries in Series and ...

Apr 10, 2025 · For instance, a laptop battery may consist of four 3.6V lithium-ion cells connected in series, reaching a total voltage of 14.4V. Then, two sets of ...



## 18650 Battery Pack Kit (8.4V / 12.6V) with Storage Box





Designed to support both 8.4V (2S) and 12.6V (3S) outputs, this kit gives flexibility for use in LED lighting, power banks, e-bikes, routers, or small UPS systems. The sturdy black storage box is ...

## Battery configurations (series and parallel) and ...

Jun 26, 2023 · The other lithium-based battery has a voltage between 3.0 V and 3.9 V. Li-phosphate is 3.2 V, Li-titanate is 2.4 V. Li-manganese, and other ...



## Lithium Series, Parallel and Series and Parallel

Mar 23, 2021 · To Series, Parallel, or Series and Parallel lithium batteries with a BMS you must first understand what a "true" BMS is, what it does, and what challenges the BMS in your ...

## Charging Multi-Cell Lithium-Ion Battery Packs

Mar 7, 2025 · With two cells in series and both being charged at 4.2V, the charge



voltage must be 8.4V. Use a 12V or greater supply for this. To determine the input voltage, multiply the number ...



---

## Contact Us

For catalog requests, pricing, or partnerships, please visit:  
<https://www.posecard.eu>