

SolarTech Power Solutions

60v lithium iron phosphate battery pack charging current



Overview

Stage 1 battery charging is typically done at 30%-100% (0.3C to 1.0C) current of the capacity rating of the battery. Stage 1 of the SLA chart above takes four hours to complete. What is lithium iron phosphate (LiFePO₄) battery?

Lithium Iron Phosphate (LiFePO₄) batteries are known for their long lifespan, reliability, and safety. People widely use them in solar systems, RVs, boats, and electric vehicles. However, charging these batteries properly with a power supply is crucial to maintain their performance and longevity.

What is the charging voltage for a LiFePO₄ battery pack?

Each LiFePO₄ cell has a nominal voltage of 3.2V and a maximum charging voltage of 3.65V. To calculate the correct charging voltage for a battery pack, multiply 3.65V by the number of cells in series: Important tips: Always set the power supply to the exact voltage required for your battery pack.

How do you charge a battery pack with a power supply?

Set the voltage: Adjust the power supply to the correct voltage for your battery pack. Set the current limit: Configure the power supply to the appropriate charging current (0.2C to 0.5C). Monitor the charging process: Use a multimeter to confirm the voltage and current.

Can LiFePO₄ batteries be overcharged?

The charging voltage and current need to be carefully monitored to provide for safe and fast charging of the LiFePO₄ batteries. If the applied voltage or current level is too high, it may cause overcharging which will lead to the generation of excess heat and escalate the chances of cell damage.

How does a LiFePO₄ battery work?

Working Principle of a LiFePO₄ Battery Charging Process: During charging, lithium ions move from the LiFePO₄ cathode to the graphite anode through the electrolyte and separator. Electrons travel through the external circuit to

balance the charge, resulting in the conversion of LiFePO_4 into iron phosphate.

Are lithium iron phosphate batteries better than SLA batteries?

If you've recently purchased or are researching lithium iron phosphate batteries (referred to lithium or LiFePO_4 in this blog), you know they provide more cycles, an even distribution of power delivery, and weigh less than a comparable sealed lead acid (SLA) battery. Did you know they can also charge four times faster than SLA?

60v lithium iron phosphate battery pack charging current



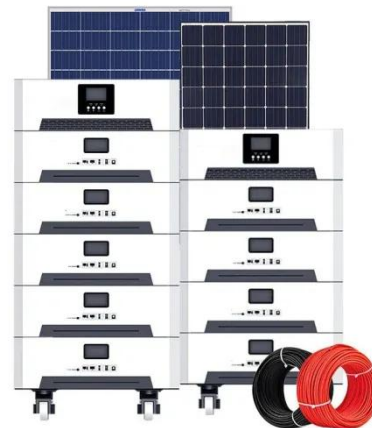
What Is A 60V Lithium Battery Voltage Chart?

Jul 11, 2025 · A 60V lithium battery voltage chart outlines state-of-charge (SoC) against voltage levels for lithium-ion (Li-ion) or lithium iron phosphate (LiFePO4) systems. At full charge, a 60V

...

How To Charge Lithium Iron Phosphate (LiFePO4) Batteries

Jan 10, 2025 · Charging Current: A safe charging rate is usually 0.2C to 0.5C. For example, for a 100Ah battery, a charging current of 20A to 50A is usually safe. ...



 **LFP 12V 200Ah**

Lithium iron phosphate battery pack 60v120a

Original Lithium Iron Phosphate LiFePO4 Battery 60V Original Lithium Iron Phosphate LiFePO4 Battery 60V 30Ah Cell Deep Cycles for Electric Bike EBike Electric Cycle 5 Year Life in ...

Lithium LiFePO4 Batteries for Trolling Motors ...

Apr 26, 2025 · Lithium-iron-phosphate (LiFePO4) batteries weigh roughly 60% less than equivalent lead-acid units, deliver high-current output, and last far ...



LiFePO4 Battery User Manual

Dec 24, 2020 · 1. Applicable Range This product specification applies to lithium iron phosphate battery products provided by our company. The product we provide (and which is described in ...

What Are the Best Practices for Charging a 60V LiFePO4 Battery?

Sep 6, 2024 · Best practices for charging a 60V LiFePO4 battery include using an appropriate charger with correct voltage settings (67.2V cut-off), avoiding overcharging or deep ...



Original Lithium Iron Phosphate LiFePO4 Battery



...

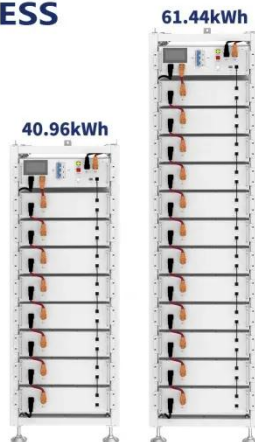
6 days ago · We use Brand New Lithium Iron Phosphate Cell For Electric BIKES Voltage - 3.2V Ampere - 25Ah Condition - Brand New Lithium offers several ...

How to Charge a Lithium Iron Phosphate Battery

May 6, 2025 · A complete guide to charging lithium iron phosphate batteries: learn the optimal voltage and current, precautions for cold and hot conditions, and how to ensure long-term ...



ESS



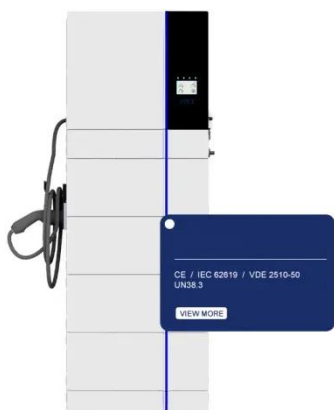
High Capacity 60V 30Ah Lithium Iron Phosphate Battery Pack ...

Explore unbeatable offers on High-Capacity 60V 30Ah Lithium Iron Phosphate Battery Pack with Built-in BMS and Charger. Shop now and enjoy amazing discounts on bulk purchases.

The principle of charging lithium iron phosphate

battery pack

May 24, 2022 · The charging method of lithium iron phosphate battery pack is constant current and constant voltage charging, and the charging method of lead-acid battery is pulse, so ...



LiFePO4 BMS Selection Guide: Matching Your Pack's Voltage, ...

Aug 19, 2025 · LiFePO4 BMS Selection Guide: Matching Your Pack's Voltage, C-Rating, and Current Lithium iron phosphate (LiFePO4) batteries have become one of the most reliable and ...

How to Properly Charge LiFePO4 Battery with a ...

Jan 8, 2025 · Lithium Iron Phosphate (LiFePO4) batteries are known for their long lifespan, reliability, and safety. People widely use them in solar systems, RVs, ...



lifepo4 battery pack 60V 36Ah For EV



Sep 30, 2021 · Purchase a LiFePO4 battery pack 60V 36Ah for your electric vehicle (EV). This high-capacity battery is engineered for improved performance and long-lasting power, ...

The Ultimate Guide to 60v 100ah Lithium Batteries and Beyond

Oct 10, 2024 · Why Choose a 60v 100ah Lithium Battery? Choosing the right battery can be a daunting task with so many options out there. However, the 60v 100ah lithium battery brings ...



Contact Us

For catalog requests, pricing, or partnerships, please visit:
<https://www.posecard.eu>