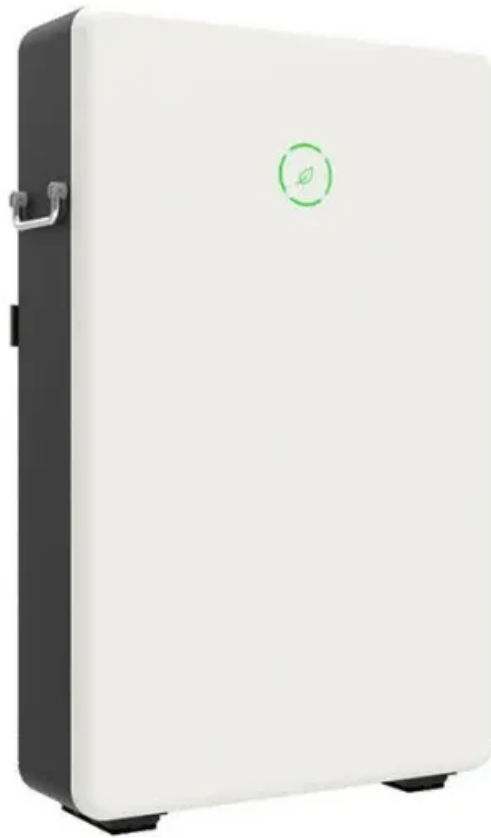


SolarTech Power Solutions

12V to 220 inverter



Overview

What is a 12V inverter?

A 12V inverter is an electronic device that converts 12V DC power into 220V AC power. This type of inverter is typically used to convert automotive or other 12V DC power sources into standard household or industrial power to power a variety of devices. inverter.com provides inverters from 300w to 3000w.

What is a 12V DC to 220V AC converter?

A 12V DC to 220 V AC converter can also be designed using simple transistors. It can be used to power lamps up to 35W but can be made to drive more powerful loads by adding more MOSFETS. The inverter implemented in this circuit is a square wave inverter and works with devices that do not require pure sine wave AC.

How to convert 12V to 220V?

$F = 1 / (1.38 * R2 * C1)$ The inverting signals from the oscillator are amplified by the Power MOSFETS T1 and T4. These amplified signals are given to the step-up transformer with its center tap connected to 12V DC. The turns ratio of the transformer must be 1:19 in order to convert 12V to 220V.

What is a 1000 watt 12V power inverter?

1000 watt 12V power inverter for sale, input voltage DC 12V, continuous power 1000W and unload current less than 0.8A. Comes with a USB port, and the 12V to 110V inverters' max efficiency reaches 90%, works at (-10°C, 50°C), and stores at (-30°C, 70°C). Modified sine inverter is compatible with air conditioners, washing machines, ovens, and so on.

What types of inverters are available?

We offer a variety of specifications and models of inverters to meet your power needs, whether for home, automotive, or travel purposes. The

Leaptrend Sirius series 3000W 12V Pure Sine Wave Inverter is perfect for most off-grid systems, whether for a van, RVs, trucks, boats, yachts, coffee van inverter or any remote location needing power.

What is a modified sine wave inverter?

The modified sine wave inverter delivers 600-watt peak power and converts 12V DC from battery or car lighter to AC 110V or 220V household power. Come with a USB port, 12V to 110V inverter can be a universal outlet for fast-charging electronic devices.

12V to 220 inverter

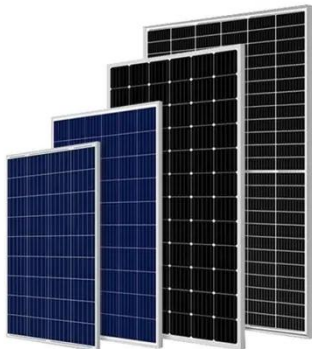


How To Make 12v DC to 220v AC Converter/Inverter Circuit ...

Sep 18, 2024 · Here, a simple voltage driven inverter circuit using power transistors as switching devices is build, which converts 12V DC signal to single phase 220V AC. The basic idea ...

12v Inverter, 12v DC to 110v/220v AC Power Inverter , inverter...

12V 300-watt power inverter for sale. The modified sine wave inverter delivers 600-watt peak power and converts 12V DC from battery or car lighter to AC 110V or 220V household power. ...



12v To 220v Inverter in Pakistan

Find the best 12v To 220v Inverter in Pakistan. OLX Pakistan offers online local classified ads for 12v To 220v Inverter. Post your classified ad for free in various categories like mobiles, tablets, ...

12 Volt To 220 Inverter in Pakistan

Find the best 12 Volt To 220 Inverter in Pakistan. OLX Pakistan offers online local classified ads for 12 Volt To 220 Inverter. Post your classified ad for free in various categories like mobiles, ...


☒ IP65/IP55 OUTDOOR CABINET

☒ IP54/55

☒ OUTDOOR ENERGY STORAGE CABINET

☒ OUTDOOR MODULE CABINET

☒ LFP 12V 100Ah

Converter 12v To 220 in Pakistan

Find the best Converter 12v To 220 in Pakistan. OLX Pakistan offers online local classified ads for Converter 12v To 220. Post your classified ad for free in various categories like mobiles, ...

Spannungswandler Inverter (Wechselrichter) auf 220 Volt

Spannungswandler Inverter (Wechselrichter), das ist die mobile Steckdose (220V 50Hz) für unterwegs, überall dort wo kein Stromnetz, dafür aber 12 oder 24 Volt Gleichspannung ...



Contact Us

For catalog requests, pricing, or partnerships, please visit:
<https://www.posecard.eu>